



BULGUL 003 - [REDACTED] HOUSE

YILLI RREUNG HOUSING ABORIGINAL CORPORATION
ICN: 4241 | ABN: 48 983 249 337

Contents



Details of Dwelling	3
Summary	4
Construction Photos	8
Builders Declaration	26
Electrical Certification	27



Prepared By:
John Adams
Alicia Briston

Summary

██████████ house is a 2 bedroom, 1 bathroom, kitchen and dining. We have extended the home to include a third bedroom, disabled ramp at front, deck/patio at the back, garden shed and upgraded the Solar System.

This project was delivered based on our initial scope of works. It has been completed on time and budget. The house refurbishment represents the Northern Territory Government Support for the Town Camp Communities.

██████████ home has been refurbished to a high standard ensuring the optimum health and safety of all residents. Modifications of this refurbishment has now provided a safe and secure home with that of a new home feel.

Renovation of the property included:

Exterior

- Pressure clean exterior of house
- Relocate 2 sets of stairs including 6 step treads
- Install new disabled ramp to front of house
- New back deck approx 6m x 5m including roof
- Check, service and report on hot water service
- Construct new storage shed including concrete slab 3m x 3m
- Install new clothesline



Kitchen

- Replace kitchen sink mixer with ss mixer
- New kitchen, pantry and robes
- Service louvre galleries
- Replace fly screen mesh

Bathroom

- Replace solid core door + privacy set + door stop
- Replace existing bathroom fixtures and replace with ss wall sink + ss mixer + mirror
- Service louvre galleries and louvres
- Install 900mm stainless steel shelving

Laundry Outdoor

- Demolish existing laundry fixtures
- Replace wall lining and flooring
- CFC sheet laundry
- Plum new sink and washing machine taps
- Install new laundry tub and ss mixer to wall + washing machine cox
- Install new roof 10 sm

Bedroom 1

- Replace solid core door and paint + privacy set + door stop
- Service louvre galleries and louvres
- Replace fly screen mesh
- Supply and install stainless steel wardrobes



Bedroom 2

- Replace solid core door and paint + privacy set + door stop
- Service louvre galleries and louvres
- Replace fly screen mesh
- Supply and install stainless steel wardrobes

Bedroom 3


- Construct new bedroom 4 x 5 meters with entry door, window, tiling, painting and electrical fit out
- Supply and install stainless steel wardrobes

Complete new Solar System

- 7.5K W / SP Pro
- 8 x power plus lithium battery life 4833P 22.8 Wh - Select Live
- Fronius 10 K W Gen24 AC Coupled Inverter
- 27 x 440 JA PV Modules (11 K W array)
- Electrical reticulation
- Solar Panel Racking, cables supports

Electrical works

- Replace/supply and install hardwired smoke detectors in compliance with NCC and AS 3786
- Checked earth stakes are complaint with NCC AS 3000
- Checked all electrical circuits and RCD's and issue electrical COC in accordance with Australian Standards
- Replace/supplied and installed double GPO (8 each)
- Replaced/supplied and install W/P double GPO (4 each)

- 
- Supply and installation of lockable circuit breaker including reporting to PWC
 - Removed existing light fitting and replaced with LED Oyster light fitting (3 each)
 - Remove existing light fitting and replace with W/P LED Oyster light fitting (3 each)
 - Supply and install switch box

The following is a list of suppliers and sub-contractors who were engaged in the refurbishment of the project

- Palmerston Paint Supplies
- Steve Banton Electrical Services
- Easy Glass Services
- The Good Guys
- Northern Tile Gallery
- Bunnings
- Smokin Stainless

Outside Before



Outside After





Kitchen Before



Kitchen After



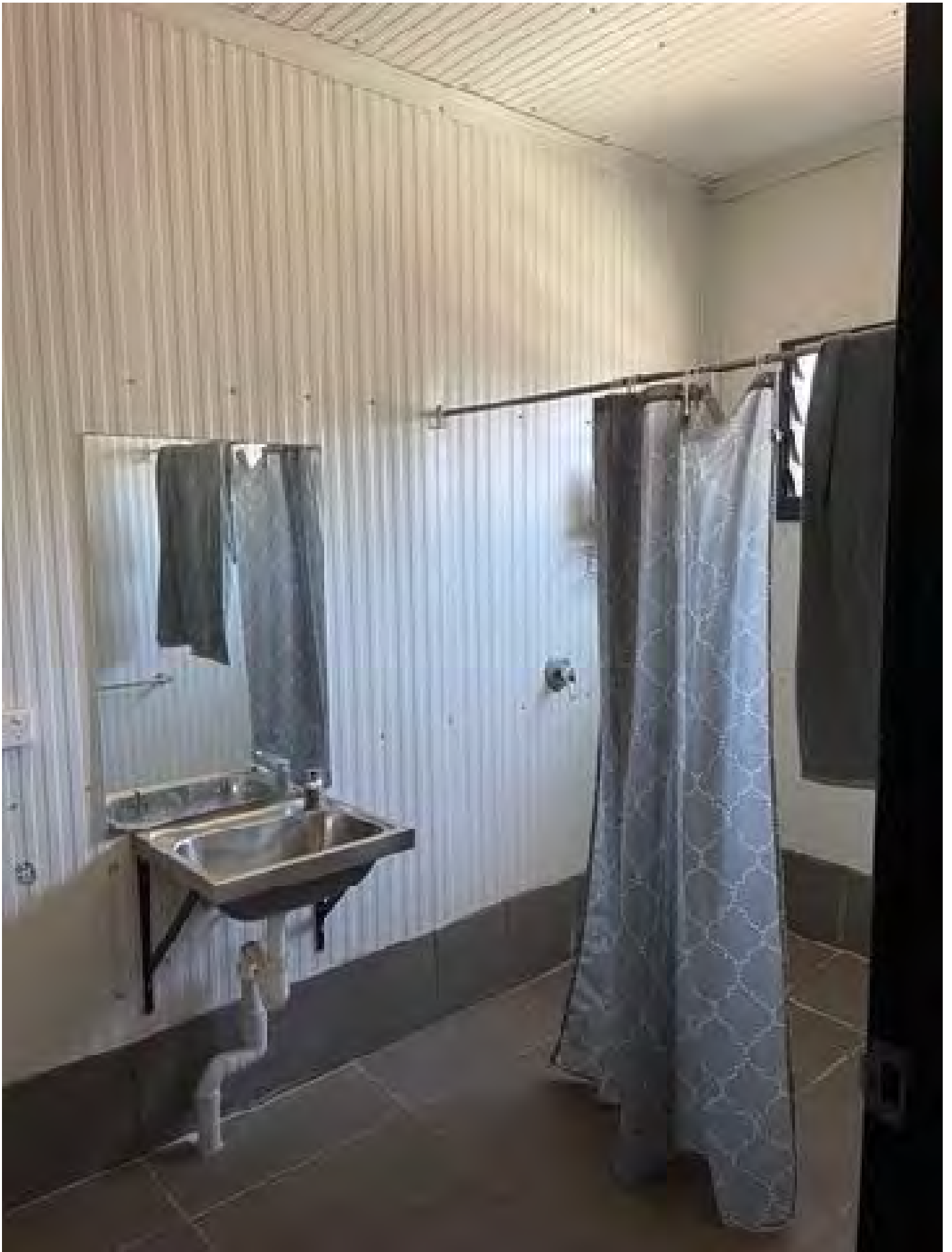
Dining After



Lounge After



Bathroom Before



Bathroom After



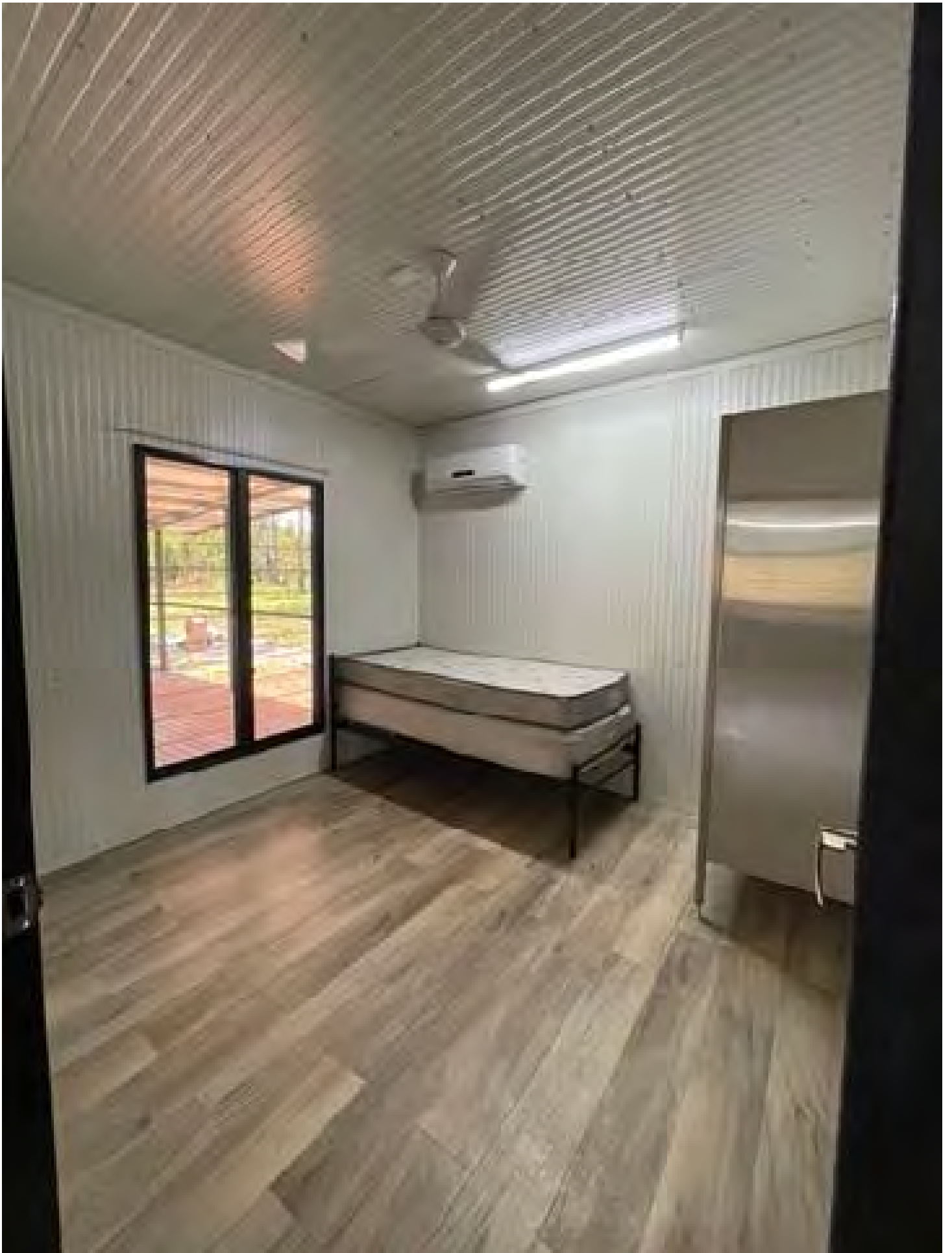
Toilet After



Bedroom 1 Before



Bedroom 1 After



Bedroom 2 Before



Bedroom 2 After



New Bedroom - Bedroom 3 - Entry



Bedroom 3 Inside



Deck / Patio



Breezeway



