

Completion Report

Project Name:	Artekerre (Harry Creek) & Alkupitja (Gillen Bore) HHIP
Property Address:	House 1, Alkupitja (Gillen Bore)





Table of Contents

Project Summary.....	3
Visual Progress.....	7
Attachments.....	16

Project Summary

Service provider	Ingkerreke Services Aboriginal Corporation
Contact details	Ms. Jozan Collins T: 08 8950 2200
Australian Business Number (ABN)	41 353 678 701
Contractor Accreditation Limited (CAL) Registration Number	A-18-14798-02-25
Community ID	714
Asset No.	House 1
Contract No.	HHIPC00006
Completion date	12/2/26

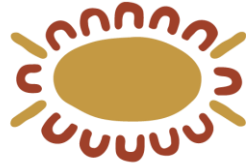
Ingkerreke Services Aboriginal Corporation (ISAC) undertook housing upgrades at House 1 Gillen Bore on behalf of the Homeland and the Northern Territory Government. The project was executed as planned, resulting in a high-quality finish that fulfilled the expectations of both our client and the community.

The work began on 20th of October 2025, and was completed by the 12th of February 2026, spanning a total of almost 17 weeks.

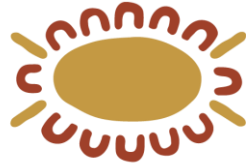
The upgrades were designed in alignment with the 9 Healthy Living Principles, considering the specific requirements of families and individuals. These needs were identified through discussions with residents, stakeholders, and leveraging ISAC's ongoing experience with maintenance and repairs in the Homelands. As the service provider for Gillen Bore, our aim was to ensure that funding was utilized effectively according to resident needs while maintaining high standards of quality and durability in the work performed.

ISAC has been contracted to implement the following housing upgrade works for House 1 Gillen Bore under the Capital Grant Funding Agreement (HHIPC00006). The completed works include:

Throughout the Dwelling		
Full internal repaint	Clean and paint all previously painted walls, ceilings, trims, posts, doors, window frames and architraves. Prepare and patch any cracks/holes throughout internal building before paint including painting floor. Colours as selected by residents.	
Heavy duty clean/paint preparation	Provide industrial heavy duty clean to all internal surfaces including acid wash to toilet bowl, bath and all tiled surfaces.	
Final Trade Clean	Ensure all surfaces and clean and all building rubbish is removed.	
Solar Service	Service Solar hot water unit.	
Exterior		
Solar Service	Service Solar Hot Water Unit - Refer general notes page for service details 300 Litre.	
Electrical COC	Provide COC on handover.	
Clothesline	Restrung existing clothesline.	
Yard clean	Remove and dispose approx. 5m ² waste to local rubbish dump.	
EAC service	Service evaporative Air conditioner.	
Lounge/Dining		
Locksets entrance	Front Door	Supply install new keyed alike.
Windows Service	Service	Service complete. Refer general notes page for service details.
Electrical refresh		Replace unserviceable or unrepresentable fitting and fixtures.
Kitchen		
Floor Coverings		Tile throughout approx. 16 SQM.
Electrical refresh		Replace unserviceable or unrepresentable fitting and fixtures.
Range Hood		Install Rangehood above stove.
Kitchen Cupboards		Replace kitchen joinery with new timber kitchen, like for like.
Sink	New	Install new sink with new pvc waste trap.
Flick mixer	New	Install new flick mixer.
Splashback Tiles/stainless	New	Remove replace with new 150 x 150 include grout silicone seal.



Passage/Hall way		
Electrical refresh		Replace unserviceable or unrepresentable fitting and fixtures.
Locksets entrance	Front Door	Supply install new keyed alike.
Laundry		
Lock sets	Entrance	Supply install new keyed alike.
Windows Service	Service	Ease and Adjust and lubricate sliding window rollers.
W/M through tapware	Service	Service complete set.
W/M Tapware	Service	Service complete set.
Splash back tiles	Replace	Replace missing 200mm x 200mm white gloss tiles.
Electrical refresh		Replace unserviceable or unrepresentable fitting and fixtures.
Bedroom 1		
Electrical refresh		Replace unserviceable or unrepresentable fitting and fixtures.
Windows Service	Service/Rollers	Ease & Adjust & lubricate sliding window rollers.
Bedroom 2		
Electrical refresh		Replace unserviceable or unrepresentable fitting and fixtures.
Windows Service	Service/Rollers	Ease & Adjust & lubricate sliding window rollers.
Bedroom 3		
Electrical refresh		Replace unserviceable or unrepresentable fitting and fixtures.
Windows Service	Service/Rollers	Ease & Adjust & lubricate sliding window rollers.
Built-in Cupboards	Ease adjust	Replace missing doors and hardware.
Bedroom 4		
Electrical refresh		Replace unserviceable or unrepresentable fitting and fixtures.
Windows Service	Service/Rollers	Ease & Adjust & lubricate sliding window rollers.
Built-in Cupboards	Ease adjust	Replace missing doors and hardware.
Ceiling fans	New	Supply install new ceiling fan 1400mm.
Bedroom 5		
Electrical refresh		Replace unserviceable or unrepresentable fitting and fixtures.



Windows Service	Service/Rollers	Ease & Adjust & lubricate sliding window rollers.
Ceiling fans	New	Supply install new ceiling fan 1400mm.
WC Toilet		
Windows Service	Service	Ease & Adjust & lubricate sliding window rollers.
Toilet suite		Heavy clean existing.
Bathroom		
Tiling	Tiles	Remove replace complete include water proof 16 m2 floors. As well as skirt and wet walls, approx. 15 SQM.
Electrical refresh		Replace unserviceable or unrepresentable fitting and fixtures.
Windows service	Service only	Ease & Adjust & lubricate sliding window rollers.
Security Screens	Replace/New	Replace complete aluminium security window screen, includes new seals, rods & silicone if required.
Shower curtain rail	New	Remove replace all new including brace with back blocking.
Shower Rose/Disable	Replace	Remove replace with new include flange.
vanity	New	Install new vanity.
Mirror	New	Install new shaving cabinet.
Coat Hooks	3	Install new x 3 coat hooks.
Towel Rail 900 mm 32 mm SS	New	Remove & dispose of existing towel rail & supply & install chrome plated towel rail.
Bathtub	Replace	Remove supply fit new include bricking up ready for tiling.
Bathtub complete tapware		Removes replace complete set include servicing breach.

Visual Progress

Before:



After:



Before:



After:



Before:



After:



Before:



After:



Before:



After:

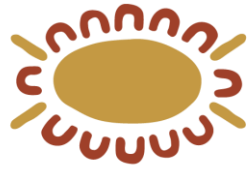


Before:



After:





**Ingkerreke
Services**
Aboriginal Corporation

After:



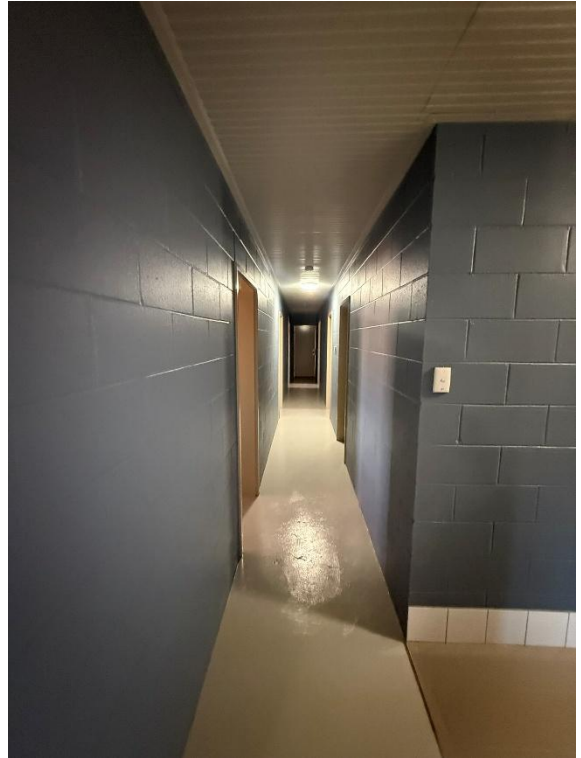
After:

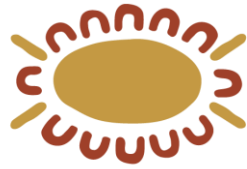


Before:



After:





Before:



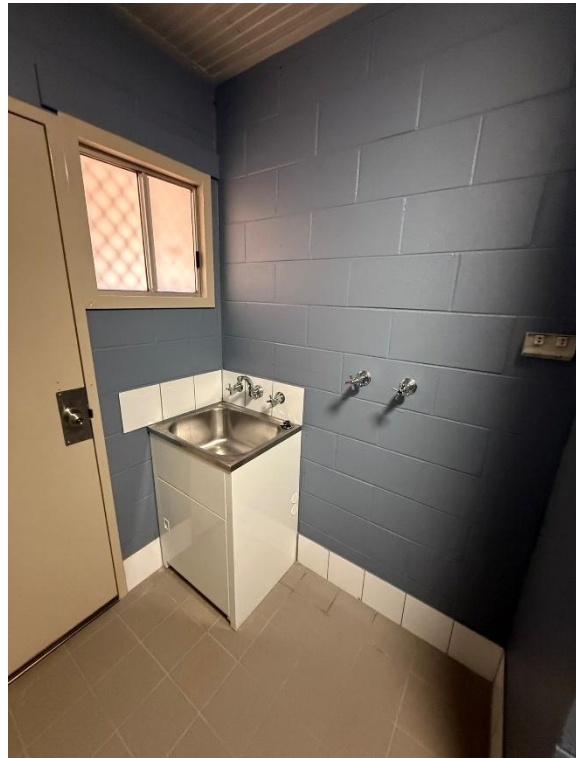
After:

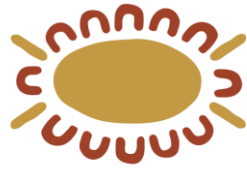


Before:



After:

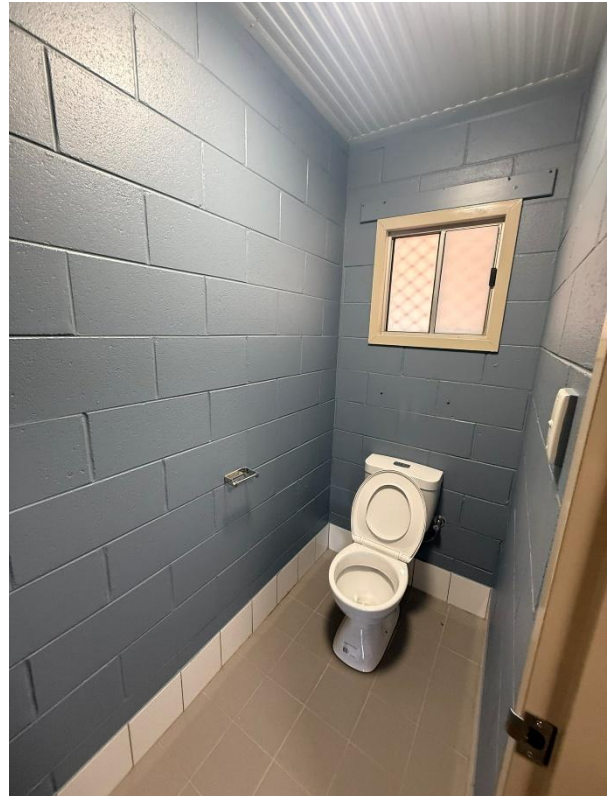




Before:



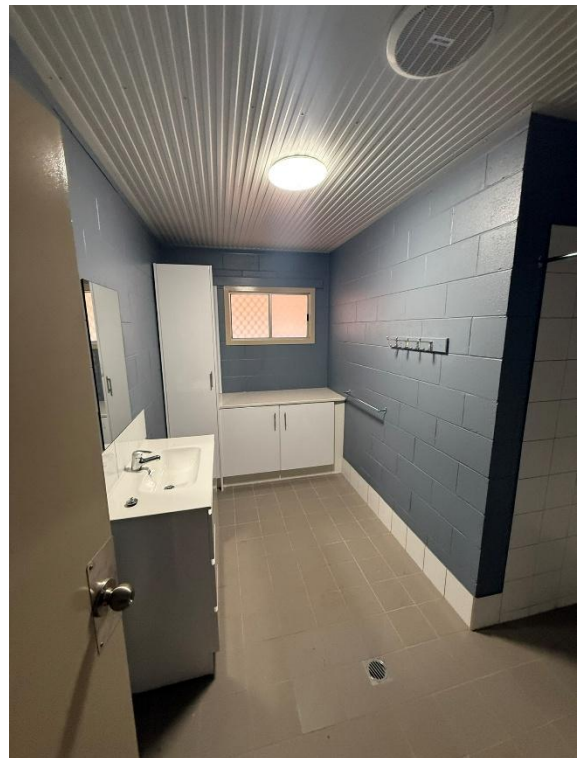
After:

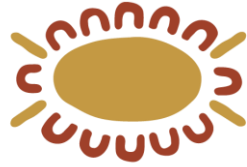


Before:



After:



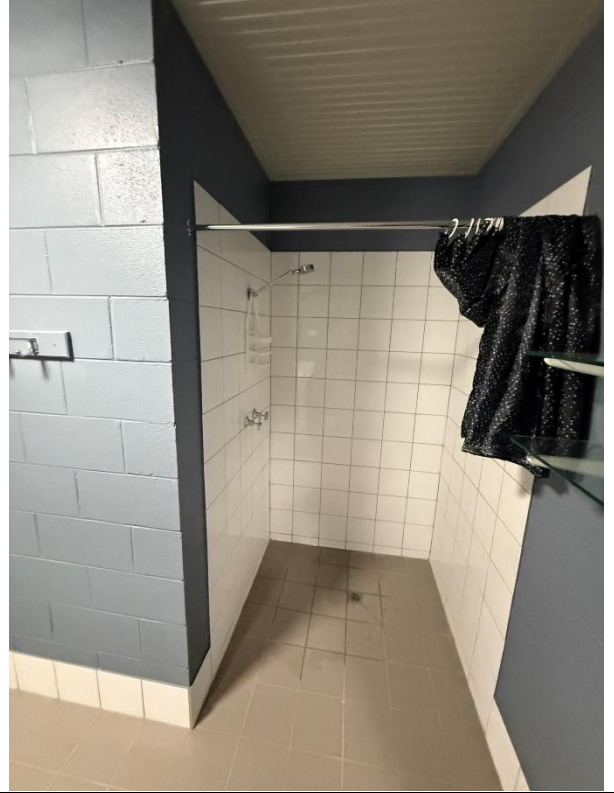


**Ingkerreke
Services**
Aboriginal Corporation

Before:



After:

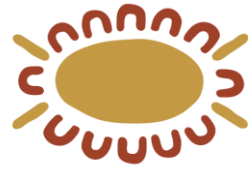


Before:



After:



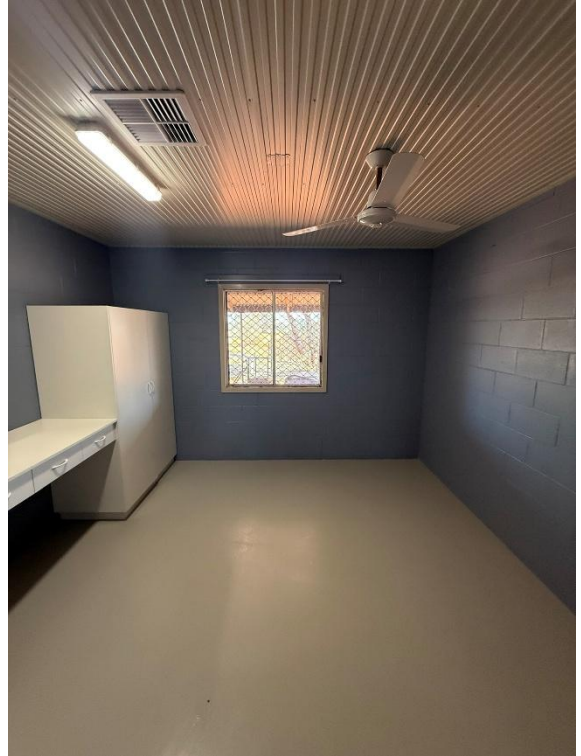


**Ingkerreke
Services**
Aboriginal Corporation

Before:



After:



Before:



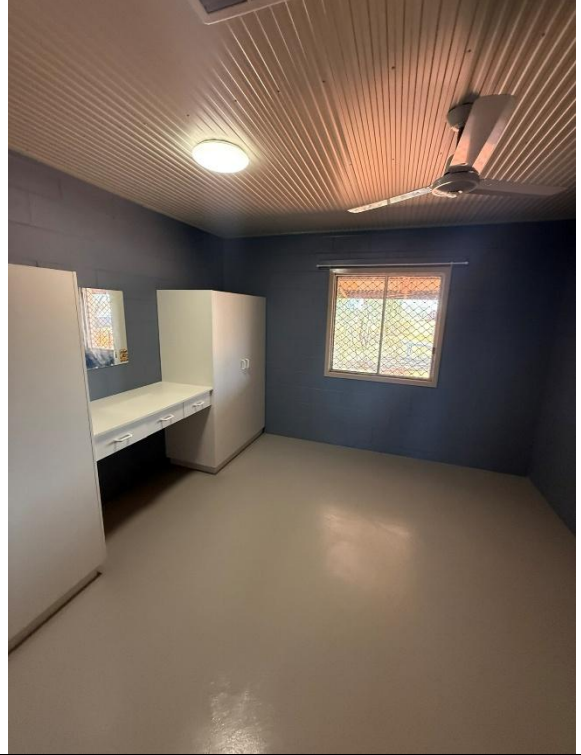
After:



Before:



After:





Attachments

Gas Certificate of Compliance

Waterproofing Certificate