

Completion Report

Grant Title

NTWP00012

Project Title

HHIP - NT Wide - Banthula - Installation of Generator

Description of work undertaken

Scope of Work

1. Generator Supply & Freight 45kVA Generator with Kubota V3800T Engine and Stamford UCI224G Alternator. ComAp Main Controller with auto-start functionality. Freight to Darwin and transport to Banthula,
2. Mounting & Structural Enhancements Steel frame mounting with rubber vibration mounts to secure the generator to the container floor.
3. Fuel Storage & Plumbing 1,000L self-bunded diesel fuel pod mounted beside the container. Stainless steel fuel lines with Ryco fittings. Spare fuel filters supplied.
4. Exhaust & Ventilation System Exhaust tubing installed through the container with Flex vibration fittings. 600mm hot air ducting with louver system for heat removal on engine radiator.
5. Security & Accessibility Features Wire cage doors installed at the front of the container for airflow and security. Lockable with chain and padlock, with keys held by maintenance contractor.
6. Electrical Installation 125A changeover switch & enclosure installed with 125A breaker. Switches, cable, and conduit installed to BESS container.
7. Logistics & Transportation, flights, freight, and logistics coordinated for equipment and personnel.
8. Install Ultra corrugated iron roof on existing container and treat any rust spots with Rust inhibitor and weld plates over the holes if required. Roof to extend past the container to allow for weather protection and ingress.

Page 4 of 11

9. Design, Compliance & Commissioning System design and integration. Certificate of Compliance issued. Testing and commissioning completed.

REMOVAL AND DISPOSAL

- Removal and disposal of old equipment where necessary
- Recycling and disposal of equipment in accordance with local authorities and guidelines

Income & Expenditure

Job Profit & Loss Statement

Attached below, Via Auditing Associate

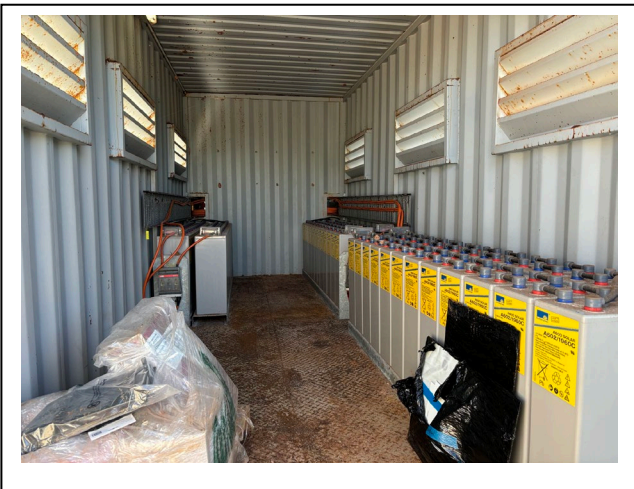
Old Genset removed



New Genset



Old Battery bank still current



New Roof



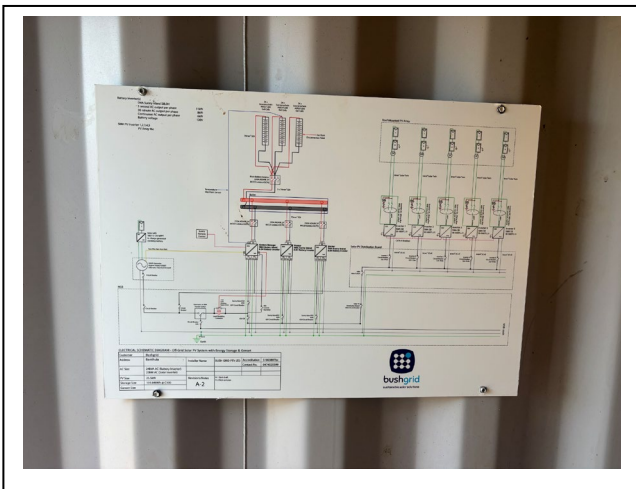
New Tank 1000ltr bundled



New roof and Genset



Wiring diagram supplied



Existing SMA inverter / chargers



Site picture



Old Genset



Faulty PV inverter



DC Solar Breakers

