

Completion Report

Project Name:	Irrelirre HHIP
Property Address	House 8, Irrelirre





Table of Contents

Project Summary.....	3
Visual Progress.....	7
Attachments.....	10

Project Summary

Service provider	Ingkerreke Services Aboriginal Corporation
Contact details	Ms. Jozan Collins T: 08 8950 2200
Australian Business Number (ABN)	41 353 678 701
Contractor Accreditation Limited (CAL) Registration Number	A-18-14798-02-25
Community ID	HHIPC00009
Asset No.	House 8
Contract No.	HHIP
Completion date	14/07/2025

Ingkerreke Services Aboriginal Corporation (ISAC) conducted housing upgrades to House 8 at Irrelirre Homeland on behalf of the NT Government and Homeland Residents.

The works have been completed in accordance with the submitted scope of works and saw the final product delivered to the high quality expected by our customer and the community.

The works at House 8 commenced 24/03/25 and was completed on 14/07/25 representing a 10 week works program.

The works were designed based on the 9 Healthy Living Principles and with specific attention to family/individual needs as determined by consultation with Residents, other stake holders and ISACs in-house knowledge gained from ongoing MES and R&M works at the Homelands.

As we are the service provider for Irrelirre, our goal in conducting these works was maximise the output of this funding in-line with resident's needs. As well as to ensure quality and durability of work.

Ingkerreke Services Aboriginal Corporation have been engaged to deliver the following housing upgrade works for House 8 as part of Capital Grant Funding Agreement (HHIPC00009). The completed works are as follows:

Kitchen:

- Heavy clean stainless benches Install Doors and draws to kitchen benches
- Supply and install additional 2100mm simply stainless bench
 - o With cupboard door and draws
- Install flick mixer
- New gas stove and oven
- Smoke alarms, replace GPOs and install extra double GPO over kitchen benches.
- Patch blockwork
- Replace 2x sash windows with sliders
- Full security screens on all windows
- 2x Screen doors with build out frames and triple locks
- 2x New doors, keyed alike with vandal plates and deadbolts

Pantry:

- Stainless steel shelving 9x 1200mm wall hung shelf.
- Install lighting 600 batten.
- Double GPO.
- Patch hole in wall good.
- Replace door with deadbolt and vandal plate.
- Change Jamb to suit door swinging into kitchen.

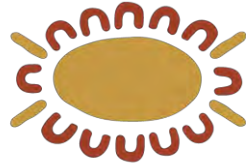
Living/Dining:

- Install 2.5KW Split System
- Curtain hooks installed (92 x 18 hardwood header installed)
- Install stainless steel shelving 2x 1200mm wall hung shelf
- Install Smoke Alarm

Bed 1:

- Install internal access door through to Living dining
 - o Block up external door and install window.
- Curtain hooks installed (92 x 18 hardwood header installed)
- New metal wardrobe cupboard
- Replace Door and door hardware include doorstops to wall.
 - o 3x coat hooks on door
- Replace lighting (600mm led batten light)
- Replace ceiling fans

Bed 2:



- Install internal access door through to Living dining
 - o Block up external door and install window.
- Curtain hooks installed (92 x 18 hardwood header installed)
- New metal wardrobe cupboard
- Replace Door and door hardware include doorstops to wall.
 - o 3x coat hooks on door
- Replace lighting (600mm led batten light)
- Replace ceiling fans
- Patch Wall

Bed 3:

- Install internal access door through to Living dining
 - o Block up external door and install window.
- Curtain hooks installed (92 x 18 hardwood header installed)
- New metal wardrobe cupboard
- Replace Door and door hardware include doorstops to wall.
 - o 3x coat hooks on door
- Replace lighting (600mm led batten light)
- Replace ceiling fans

Sleep Out:

- Room to breathe specification.
- Wall length: approx. 13 LM x Veranda Height
- Line and insulate veranda roof to sleepout area enclose with 1200mm metal stud frame wall, clad in corrugated iron & security mesh above. With two doors
 - o 3x LED Battens
 - o 2x Ceiling Fans and external weatherproof double GPOs
- Topping Slab to sleepout section to provide flush entry to ablutions block and house.
- Sleepout section to be tiled approx. 24 SQM

External:

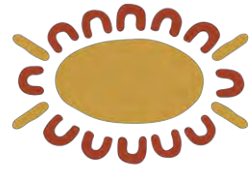
- Install T-Bar Washing Line
- Service and Relocate solar HWS 302L SolaHart
- Bollards around septic (galvanised)
- Move ORG from under veranda to external of structure
- Concrete paver paint veranda slab
- Install 9000l Rainwater tank
 - o Earth-ring with concrete top
 - o Guttering and first flush
- Gass compliance
 - o Gas Bottle size changer bracket to be affixed to concerted in post.
 - o Pigtaills.



- 300mm mow strip where no veranda slab
- Yard Clean.
- Concrete path to Sleep Out front door (ramped up at threshold to suit topped slab height approx. 200mm)

Additional General Works:

- Pest control
- Electrical & Fire Safety compliance
- Gas compliance



**Ingkerreke
Services**
Aboriginal Corporation

Visual Progress

Before:



After:

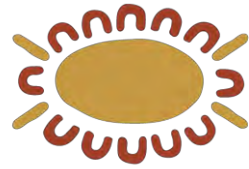


Before:



After:





Ingkerreke Services

Aboriginal Corporation

Before:



After:

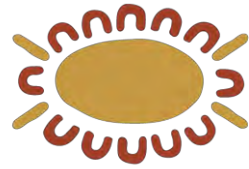


Before:



After:





**Ingkerreke
Services**
Aboriginal Corporation

After:



After:

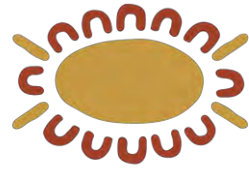


After:



After:





Before:



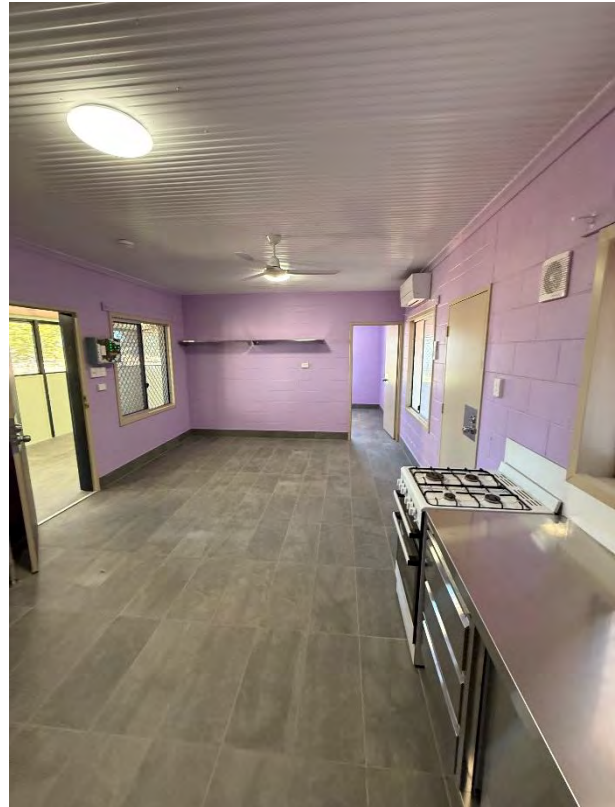
After:

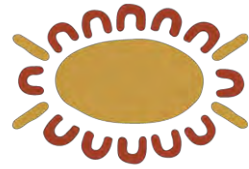


Before:



After:





After:



After:

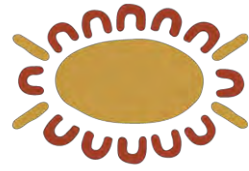


After:



After:





Ingkerreke Services

Aboriginal Corporation

Before:



After:

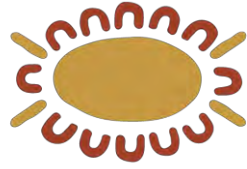


Before:



After:





Before:



After:

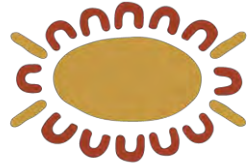


Before:



After:

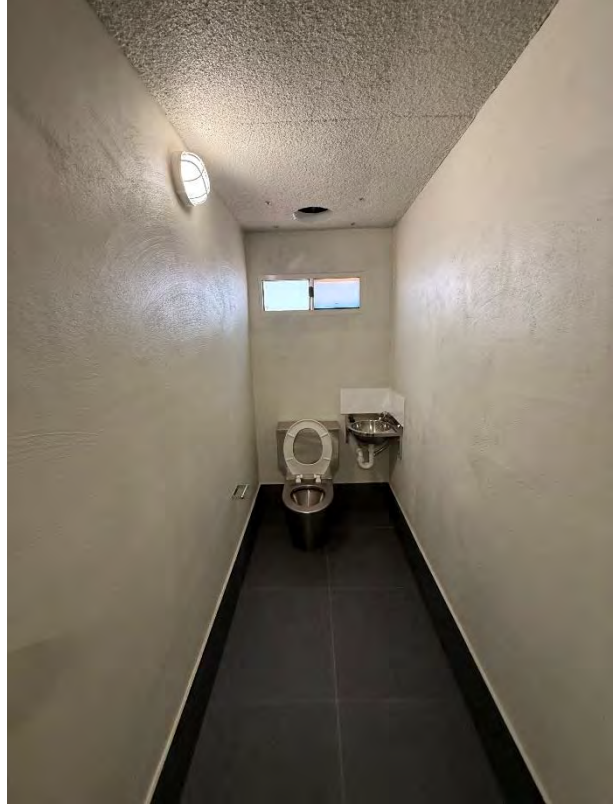




Before:



After:



After:



After:

