

# Completion Report

## Homelands Housing and Infrastructure Program

**NOW**  
**BuildNT**

\*HHIP – Wild Plum\*

\*Housing Upgrades\*

\*House No 3\*



## Contents

Project Summary .....	3
Scope of Works Overview .....	4
Visual Progress.....	9
Approved Variations.....	17
Attachments .....	18
Final Review and Acceptance.....	28

<b>Service Provider</b>	Thangkenhareng Aboriginal Corporation	<b>ABN</b>	86 778 154 824
<b>Contact Details</b>	LeRoy Hocking CEO 08 8956 9838 thangkenhareng@hotmail.com	<b>Contractor Accreditation Limited (CAL) Registration Number:</b>	
<b>Project Name</b>	HHIP	<b>Contract No.</b>	
<b>Homeland</b>	<b>Wild Plum</b>	<b>Community ID</b>	823
<b>Project Type</b>	<b>Housing upgrades</b>	<b>House #</b>	<b>3</b>
<b>Commencement Date</b>	<b>3<sup>rd</sup> November 2025</b>	<b>Completion Date</b>	<b>10th April 2026</b>

## Project Summary

*Include a brief summary of the deliverables on the project. Also include a photo of handover back to residents on completion of the project, if applicable.*

Now Build NT, as engaged by Thangkenhareng Resource Centre, have completed the housing upgrade works to House #3 at Wild Plum.

All works have been completed in accordance with the scope.

The works commenced on 3<sup>rd</sup> November, 2025 and were completed on 10th April, 2026.

Now Build NT achieved an indigenous employment rate of 40%.

## Scope of Works Overview

<b>Homeland:</b>	Wild Plum
<b>House/Asset No:</b>	#3
<b>Scoping Date:</b>	August 2025

GENERAL EXTERNAL WORKS				
7	<b>Taps &amp; Splashpads</b>	replace install new splash pad		1
	<b>Solar Service</b>	Service Solar Hot Water Unit - Refer general notes page for service details litre 180		1
20	<b>Clothesline</b>	Install new to NTG standards		1
22	<b>External GPOs</b>	Remove & dispose of existing Supply & install new weather proof combination double switched socket outlet.		1
23	<b>Demolition/walls</b>	Remove existing poorly installed walls and frame to front verandah/leave end wall as wind break and sheet make good		1
24	<b>Yard clean</b>	Remove and dispose approx. 5m2 waste to local rubbish dump		1
25	<b>ORG grate</b>	new concrete surround and grate top		1
	<b>External lights</b>	Replace 600 WP Batten x 2		2
	<b>Old gas hotwater unit</b>	Decommision old hotwaer and dispose make good.		1
	<b>Septic drains</b>	Repair IO drain covers x install 4 x bollards		1
	<b>post/handrails</b>	replace rusted post leg/supply install two new handrails to front and rear verandah approx 12lm . Rails top finshed at 900mm with mid rail at 450 centre painted black. Include handrail to stairs		12
	<b>step landing</b>	remove replace step landing 1 x 1m concrete		1
	<b>Verandah floor sheeting</b>	sheet over existing verandah with 18mm CFC sheeting approx 25m2		25
	<b>Rear step</b>	replace steps and landing include hand rail		1
General Internal Works				
26	<b>Internal Painting Throughout</b>	All Interior door, window and RAC frames	Self-Destruct - Semi Gloss Enamel	1
27		Ceilings	White Delight D12w	1
28		Walls	Hogs Bristle - Satin	1
29	<b>Full external repaint</b> - Clean and paint all previously painted walls, ceilings, trims, posts, doors, windows frames & architraves. Prepare and patch any cracks / holes throughout internal building before paint			1
30	<b>Heavy Duty Clean / Paint Preparation</b>	Provide industrial heavy clean to all internal surfaces including acid wash to toilet bowl, bath and all tiled surfaces.		1
31	<b>Pest Control</b>	Provide pest control treatment to entire house. 2 x treatments, provide pest control certificates at handover		1
32	<b>Smoke Detectors</b>	Remove existing smoke detectors and supply new 10 year lithium battery smoke detectors in compliance with NCC & AS3786		1

33	<b>Solar Hot Water Booster Switch</b>	supply and install 1 x SHW Booster switch to internal of dwelling	1	
35	<b>Final Trade Clean</b>	Ensure all surfaces are clean and all building rubbish is removed	1	
	<b>Solar Service</b>	Service Solar Hot Water Unit - Refer general notes page for service details litre 180	1	
	<b>Vinyl plank throughout</b>	Remove exiting throughout 80 m2 supply install new vinyl plank mid range quality/calk seal all edges. Inc floor prep, screw down, fill, sand	80	
<b>Living / Dining Rooms</b>				
	<b>Item</b>	<b>General Notes</b>	<b>Amount</b>	
37	<b>Entrance Door/frame</b>	Replace 820 920	Remove & dispose of existing & supply & fit new solid core door, Complete/ resecure existing door frame and seal with flashings	1
38	<b>Locksets entrance</b>	Front Door	Supply install new kk series keyed alike	1
39	<b>Vandal Plates</b>	Front Door	Supply install new steel vandal plate	1
41	<b>Weather Seal</b>	Front Door	Supply & install new RP4 Weather Excluder to external door.	1
43	<b>Door Stop</b>	Replace	Supply & install new rubber door stop to floor.	1
44	<b>Door Striker</b>	Replace	Supply & install new striker plate.	1
47	<b>Walls linings/throughout</b>	Patch/Replace	Repair /patch sheet over existing plasterboard walls through out as required. Sheeting to be 9mm ply board at 2100mm high.ensure to glue sheets to wall. 30lm	30
49	<b>Light Fittings x2</b>	Replace	Supply and Install LED WP batten light, including removal & disposal of existing light fitting	2
50	<b>Light Switches x2</b>	Replace/new	Replace 1 gang light switch x gang x gang	2
51	<b>Power Points x3</b>	Double	Remove & dispose of existing Supply & install new combination double switched socket outlet.	3
52	<b>Ceiling Fans</b>	New	Supply new ceiling fan 1400mm	1
53	<b>Fan Controls With Toggle Switch</b>	New	Supply new switch complete with new wire feed raked ceiling no cavity	1
58	<b>Windows Service</b>	Service	Service complete . Refer general notes page for service details	3
63	<b>Curtain Rod Brackets</b>	Replace	Remove & dispose of existing curtain rod brackets & supply & install new curtain rod brackets & fixings.	3
<b>Kitchen</b>				
	<b>Item</b>	<b>General Notes</b>	<b>Amount</b>	
78	<b>Light Fittings x1</b>	Replace	Supply and Install LED WP Batten light, including removal & disposal of existing light fitting X 1	1
79	<b>Light Switches</b>	Replace	Replace gang light switch	1
80	<b>Power Points</b>	Single / Double / WP	Remove & dispose of existing combination double switched socket outlet.	2
87	<b>Windows Service</b>		Ease & Adjust & lubricate sliding window rollers.	2
91	<b>Curtain Rod Brackets</b>	Replace	Remove & dispose of existing curtain rod brackets & supply & install new curtain rod brackets & fixings.	1
92	<b>Pantry</b>	Ease adjust	Ease and adjust cupboard doors to ensure smooth operation, so not to inhibit/bind surfaces. New door + hardware on my notes	1
93	<b>Kitchen cupboards</b>	Ease adjust	Ease and adjust cupboard doors to ensure smooth operation, so not to inhibit/bind surfaces. Replace as per below? or are these overheads?	
107	<b>Kitchen cupboards</b>	Replace/ Stainless	Remove Replace like for like Refer to specs and general notes 4lm new SS	4
102	<b>Drawer Unit</b>	Replace/Stainless	Replace drawer unit to kitchen cupboards, & install new 2 drawer unit,	1

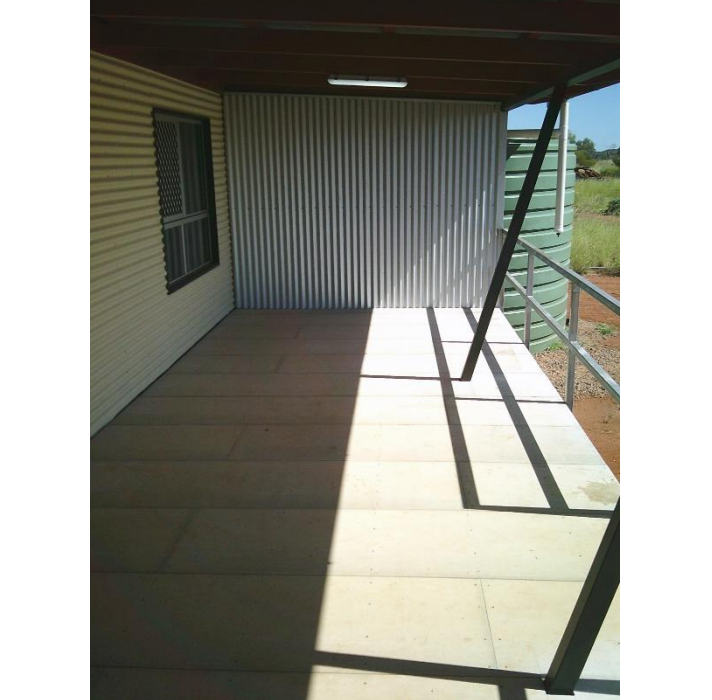
103	Stove Westinghouse Gas	New/ Replace	Disconnect, remove & dispose of existing stove & install new stove as per manufacture's recommendation and AS Standards. Inclusive of any additional materials and labour to ensure that stove can be moved for cleaning purposes. Provide DHsg with warranty documentation. Gas to include COC	1
106	Stove Anti-Tilt Plate / Locking Pin	Replace /New	Supply new secured to floor with 4 fixings install locking pin as per manufactures recommendations. Inc in stove install	1
107	Wall Tiles - Floor Level to 600mm above hotplate & 200mm past Stove edge	Replace /New/Stainless	Tile from floor level to above stove / stainless sheet	1
108	Sink	New /seal	Remove replace with new include new pvc waste trap	1
109	Flick mixer	Replace /New/service	Remove replace with new flick mixer	1
111	Minicocks	New	Supply and fit new minicocks x 2 hot and cold	1
112	Splashback Tiles/stainless	Replace /New	Remove replace with new stainless sheet include silicone seal 4lm	1
	SS shelf x 2	new	supply install 2 x SS shelves	2
<b>Passage / Hall way</b>				
	<b>Item</b>		<b>General Notes</b>	<b>Amount</b>
135	Man Hole Cover	Replace /new/ service	supply new fix existing ceiling make good for new manhole	1
<b>Bedroom #1</b>				
	<b>Item</b>		<b>General Notes</b>	<b>Amount</b>
138	Doors	Replace /new 820 920	Replace complete seal top and bottom edges	1
139	Lock Sets	Privacy	supply install new kk series	1
144	Door Stop	Replace /new	Supply & install new rubber door stop to floor.	1
145	Door Striker	Replace /new	Supply & install new striker plate.	1
151	Light Fittings X 1	Replace /new	Supply and Install LED WP batten light, including removal & disposal of existing light fitting	1
152	Light Switches	Service/replace	Replace 1 gang light switch	1
153	Power Points X 1	Single / Double	Remove & dispose of existing combination double switched socket outlet. X 1	1
154	Ceiling Fans	Replace /new	Supply install new ceiling fan 1200mm	1
155	Fan Controls With Toggle Switch	Replace /new	Supply instal new switch complete with new wire feed -	1
159	Windows Service	Service /Rollers	Ease & Adjust & lubricate sliding window rollers.	1
161	Fly Screens	Replace /new	Replace complete aluminium security window screen, includes new seals, rods & silicone if required	1
163	Curtain Rod Brackets	Replace /new	Remove & dispose of existing curtain rod brackets & supply & install new curtain rod brackets & fixings.	1
165	Built-in Cupboards	Ease adjust/stainless	supply install new 900mm stainless	1
<b>Bedroom #2</b>				
	<b>Item</b>		<b>General Notes</b>	<b>Amount</b>
167	Door	Replace 820 920	Replace complete seal top and bottom edges	1
168	Lock Sets	Privacy	supply install new kk series	1
173	Door Stop	Replace /new	Supply & install new rubber door stop to floor.	1
174	Door Striker	Replace /new	Supply & install new striker plate.	1

180	Light Fittings	Service	Supply and Install LED WP stainless light, including removal & disposal of existing light fitting	1
181	Light Switches	Replace /new	Replace 1 gang light switch	1
182	Power Points	Double	Remove & dispose of existing Supply & install new combination double switched socket outlet.	1
183	Ceiling Fans	Service/replace	Supply install new ceiling fan 1200mm	1
184	Fan Controls With Toggle Switch	Replace /new	Supply install new switch complete with new wire feed	1
187	Windows Replace/combo	Replace /new	Remove supply new with half security screen	1
192	Curtain Rod Brackets	Replace /new	Remove & dispose of existing curtain rod brackets & supply & install new curtain rod brackets & fixings.	1
194	Built-in Cupboards	Ease adjust/new	Supply install 900mm stainless	1
<b>Bathroom</b>				
				Amount
	Item		General Notes	
254	Doors	Replace 820 720	Replace complete seal top and bottom edges	1
255	Lock Sets	Privacy	supply install new kk series	1
260	Door Stop	Replace /new	Supply & install new rubber door stop to floor.	1
261	Door Striker	Replace /new	Supply & install new striker plate.	1
265	Wall linings	remove replace	Repair patch ready for paint 20 m2 to 2100mm high	20
266	Floor Coverings	Tiles	Remove replace complete include water proof 6 m2	12
267	Floor Grate	Replace /new	Replace with new 80 mm chrome	2
268	Light Fittings WP	Replace /new	supply install 600 LED batten	1
269	Light Switches	Replace /new	Remove exiting supply install new single gang	1
270	Power Points	W/P Double	Remove & dispose of existing Supply & install new combination double switched socket outlet.	1
272	Windows Service	service only	Ease & Adjust & lubricate sliding window rollers.	1
277	Wall / Ceramic Skirt Tiles	Replace /new	Remove exiting replace all new 12 m2	12
279	Shower Curtain Rail	Replace /new	Remove replace all new including brace with back blocking	1
280	Shower Soap Dish	Replace /new	Remove and replace with ss style 200x100mm	1
281	Shower Rose	Replace	Remove replace with new include flange	1
282	Shower Tapware	Replace /flickmixer	replace with flickmixer	1
283	Handbasin	Replace SS	Replace complete include new tapware pvc trap	1
285	Minicocks	Replace	Supply install new minicocks x 2 hot and cold	1
286	Mirror	Replace /new	Remove replace to match exiting size approx. .5 M2	1
288	Coat Hooks	1, 2, 3,	Install new x 3 coat hooks	1
289	Towel Rail 900 mm 32mm SS	Resecure/Replace	Remove & dispose of existing towel rail & supply & install chrome plated towel rail.	1
290	shower/flooring	Remove/Replace /new	Remove supply fit new include hob for shower ready for tiling	1
	Basin splashback	Replace /new	Remove and replace match exiting .5 m2	1
	SS shelf	new	600mm SS shelf x1	1
<b>WC Toilet</b>				
	Item		General Notes	Amount

330	Toilet suite	New	Replace	Replace complete include minicock, Easy hooker	1
334	Toilet Roll Holder		Replace /Resecure	Remove supply install new SS holder	1
335	Shelf		Replace /new	Supply install new 600 ss type	1
336	Isolation Minicock		Replace /new	supply install new minicock include easy hooker	1
<b>Laundry</b>					
	<b>Item</b>			<b>General Notes</b>	<b>Amount</b>
338	Door 1		Internal	Replace complete seal top and bottom edges	1
339	Lock Sets		Entrance	supply install new kk series keyed alike	1
342	Weather Seal RP4		Replace /new	Supply install new RP4 seal	1
344	Door Stop		Replace /new	Supply & install new rubber door stop to floor.	1
345	Door Striker		Replace /new	Supply & install new striker plate.	1
349	Floor Coverings		Tiles	Remove replace 5 m2 include grout silicone skirt tiles	1
350	Floor Grate		Replace /new	80 mm	1
351	Light Fittings		W/P 600mm LED	Remove replace with w/p 600 LED	1
352	Light Switches		Replace /new	Replace gang light switch	1
353	Power Points		W/P Double	Remove & dispose of existing Supply & install new weather proof combination double switched socket outlet.	1
355	Windows Service		Service	Ease & Adjust & lubricate sliding window rollers.	1
	Built-in Cupboards		Replace /new/stainless	Supply install new 900mm stainless	1
360	W/M Trough Tapware		Replace / service	Replace complete set	1
361	W/M Trough /mini		Replace / Resecure/new	Replace x 1 - Everard or equivalent 45 litre stainless steel laundry tub, single taphole, with white polymer/acrylic cabinet including suds bypass. Floor tiles to extend underneath cabinet.	1
362	Isolation Minicocks		Replace / Service	Replace x 2 Minicocks hot and cold	1
363	S/Steel Shelf		200mm x 1000	Replace supply fit fit new SS type	1
364	W/M Tapware		Replace /new/service	replace complete	1
365	Splash Back Tiles/stainless		Replace /new	Remove replace 3 m2 include grout silicone	1
366	W/M Solid Waste Pipe		Replace /new	Remove supply fit new pvc include waste for WM	1

Visual Progress

Include before and after images of all areas that received upgrades. Delete/add areas as needed.

BEFORE	AFTER
Front Exterior	
	
	

**Left-Side Exterior**



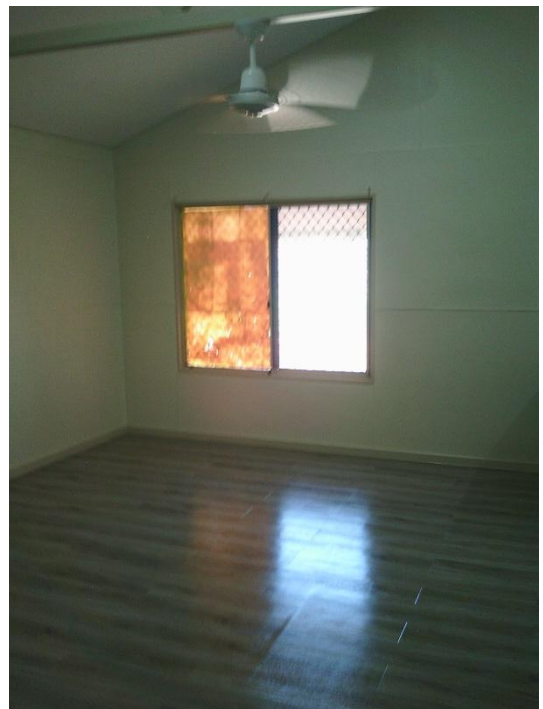
**Right-Side Exterior**



Back Exterior



Living Room

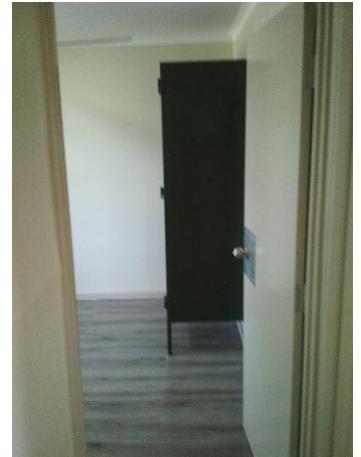




**Kitchen**



Bedroom 1



Bedroom 2



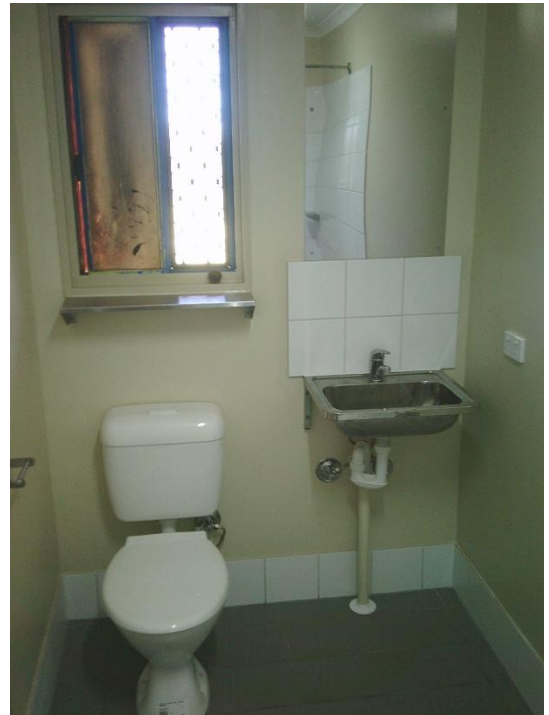
**Bathroom**

Unfortunately we are unable to provide before photos



**Toilet**

Unfortunately we are unable to provide before photos



Laundry

Unfortunately we are unable to provide before photos



External



## Approved Variations

*Insert all variations requests that were approved during the lifetime of the project (screenshots/photos).*

### Plumber

- Remove laundry breech and re-route copper lines for new ever hard 45 L cabinet install with supply and install of new flick mixer.
  - Run new waste for laundry and bathroom basins
  - Changed copper on hot line through corro wall to a thread end.
  - Replace leaking tap (1 of 3) with new one
  - Re-locate and replace gas line to code
  - Replace gas regulator
  - Re-connect faulty toilet drain
- 

### Electrical

- 1 x new RCBO
  - fixed faulty B2 fan circuit , removed and replaced with new.
- 

Front entrance door frame - remove and replace with new steel gen 3 hinge. Material only

---

### Kitchen

- Supply and install CFC tiled oven base for oven to mount on. Finished with aluminum edging, grout and silicone.
- 

### Internal throughout

- Supply and install internal pine skirting to all floor to wall surfaces - no charge as floor m2 was overs.
- 

### Laundry

- remove and install new melamine shelving and bearers approx 1m each.
  - allowed for replacement of gyprock and prep work
- 

### External

- Demo and prep to existing front decking. Had to remove the existing timber decking to lower the cfc sheeting to meet front door entry level height.
- 

### External

- Supply and install custom gas bottle holder to outside conc pad and secure to floor joist and wall cladding.
  - Supply and fit 1 x new 8.5kg gas bottle
- 

### External

- Underfloor bracing required to prop up bathroom / laundry sub floor from flexing when walking through inside.
  - Supplied and installed 3 x 450 x 450 plates, jack posts welded and bearer 100x100x4mm Gal SHS steel.
-