



Completion Report FRM-144

Project Name:	HHIPC00002 Petyale, Ileparratye & Adelaide Bore
Property Address:	House 7, Adelaide Bore Homeland.





Service Provider	AEA NT PTY LTD PO Box 519 Katherine NT 0851
Contact numbers:	(08) 89722 211
Stephen Curry - Technical Services Manager	0427 215 952
Luke Wilks - Senior Project Manager	0467 234 699
John Binns - Project Manager (Central Region)	0427 650 058
Australian Business Number (ABN)	86 009 635 901
Contractor Accreditation Limited (CAL) Registration Number	K-28-10183-07-24
Asset No	House 7, Adelaide Bore Homeland.
Contract No.	HHIPC00002
Completion date	22/10/2024

Table of Contents

1. Project Summary	3
2. Scope and Visual Confirmation of Works	4
2.1 Kitchen & Living	4
2.2 Bedrooms	5
2.3 Bathroom & Toilet Areas.....	7
2.4 Laundry & Exterior Areas.....	8



1. Project Summary

House 6, Adelaide Bore Homeland.

The Homelands Housing and Infrastructure Program (HHIP), managed through the Department of Territory Families, Housing and Communities (TFHC) is a program funded by the Australian Government of which is focused on improving the living conditions in Homelands to ensure residents have access to safe, secure and quality housing and infrastructure suitable to their needs.

AEA NT have completed the approved scope of works at House 7, Adelaide Bore Homeland delivering a quality final product which was handed back to the primary residents who now have improved access to the 9 Healthy Living Practices.

The construction works at House 7, Adelaide Bore Homeland commenced on 31st August and were completed on the 22nd of October representing a seven (7) week works program.

2. Scope and Visual Confirmation of Works.

2.1 Kitchen & Living

- Install new solid core door including entrance locksets (keyed alike with other external doors), door saver plates, weather seals, and door stops
- Install new solid core door with passage lockset
- Service windows
- Supply and install diamond grill security screens to windows
- Install curtain rod holders above living area windows only (holders only NO rods)
- Patch, prepare and paint all surfaces (walls, ceiling, door frames, doors, pantry shelves and window surrounds)
- Remove and replace shelves in existing built-in pantry
- Supply and install new stainless steel kitchen benches with stainless steel splash back
- Install new double bowl sink and flick mixer
- Grind concrete floor ready for covering
- Prepare, tile and grout floor surfaces
- Install new electrical components including stove and isolator, lights, light switches, ceiling fan, fan switch, power points, and smoke alarm.
- Paint touchups

Before works commenced:



After works completed:





2.2 Bedrooms

Bedroom 1

- Install new solid core door including privacy lockset and door stop
- Service existing window
- Supply and install diamond grill security screens to window
- Install curtain rod holders above window (holders only NO rods)
- Patch, prepare and paint all surfaces (walls, ceiling, door and window frames)
- Grind concrete floor ready for covering
- Prepare, tile and grout floor surfaces
- Supply and install new double door steel framed mesh cupboard
- Install new electrical components including light, light switch, ceiling fan, fan switch, power point
- Paint touchups

Bedroom 2

- Install new solid core door including privacy lockset and door stop
- Service existing window
- Supply and install diamond grill security screens to window
- Install curtain rod holders above window (holders only NO rods)
- Patch, prepare and paint all surfaces (walls, ceiling, door and window frames)
- Grind concrete floor ready for covering
- Prepare, tile and grout floor surfaces
- Supply and install new double door steel framed mesh cupboard
- Install new electrical components including light, light switch, ceiling fan, fan switch, power point
- Paint touchups

Bedroom 3

- Install new solid core door including privacy lockset and door stop
- Service existing window
- Supply and install diamond grill security screens to window
- Install curtain rod holders above window (holders only NO rods)
- Patch, prepare and paint all surfaces (walls, ceiling, door and window frames)
- Grind concrete floor ready for covering
- Prepare, tile and grout floor surfaces
- Supply and install new double door steel framed mesh cupboard
- Install new electrical components including light, light switch, ceiling fan, fan switch, power point
- Paint touchups

Before Bedrooms works commenced:



After Bedrooms works completed:



2.3 Bathroom & Toilet Areas

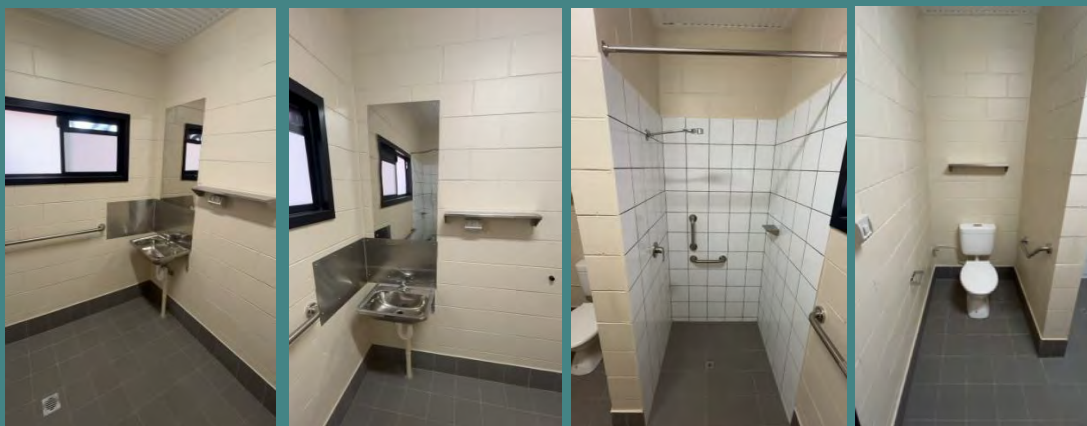
Bathroom/Toilet

- Strip out bathroom including removing shower hob/tray, wall and floor tiles
- Waterproof wet area walls and floor
- Prepare and lay screed bed with appropriate fall to floor waste
- Tile and grout floors, walls and skirting as required
- Install new solid core door including privacy lockset and door stop
- Install new window with security screen to suit existing opening
- Patch, prepare and paint all surfaces (walls, ceiling, door and window frames)
- Supply and install new plumbing fittings and fixtures including stainless steel shower mixer, outlet, shower rose, waste grate, stainless steel mixer & hand basin with splash back and mirror, toilet pan, pan rubber, mini cistern cock and toilet roll holder
- Supply and install new fixtures including towel rails, disabled grab rails, stainless steel soap holder, stainless steel shelves, shaving cabinet and hooks to back of door
- Install new electrical components including light, switch and power point
- Paint touchups

Before Bathroom & Toilet works commenced:



After Bathroom & Toilet works commenced:





2.4 Laundry & Exterior Areas

External Areas

- Service Solar Hot Water System
- Install ramps at front and rear doorway access
- Replace old gas regulator with new pigtail gas line to bottle
- Install new wall bracket for 9kg gas bottle
- Prep and paint existing T-bar clothesline uprights and re-string with stainless steel line and tensioner
- Rear verandah - pressure clean; construct 900mm high nib walls with external sheet metal cladding, black slated sight screens above to approximately 1.8m high to one end of verandah (4000 x 4000 each), to provide fit for purpose private outdoor area with suitable protection from the elements ("Wind Breaks")
- Front verandah – pressure clean; construct 900mm high nib walls with external sheet metal cladding, black slated sight screens above to approximately 1.8m high to one end of verandah (4000 x 4000 each), to provide fit for purpose private outdoor area with suitable protection from the elements ("Wind Breaks")
- Pressure clean, prepare and paint external wall surfaces, posts and frames
- Supply and install diamond grill security screen doors to front and rear access doors
- Install new main water valve box with 600mm concrete surround
- Supply and install yellow painted bollards around septic tank
- Provide concrete splash pad to suit existing front outside garden tap
- Supply and install new 3000L poly water tank on existing base, with first flush kit and timed push button bibcock tap
- Install new 1200 high chain-link perimeter fencing, 30m x 30m around house with double vehicular access gate and pedestrian access gates
- Install new electrical components including lights, switches, power points, meter isolator, RCDs, and compliant switchboard

Before Laundry & Exterior works commenced:



After Laundry & Exterior works commenced

