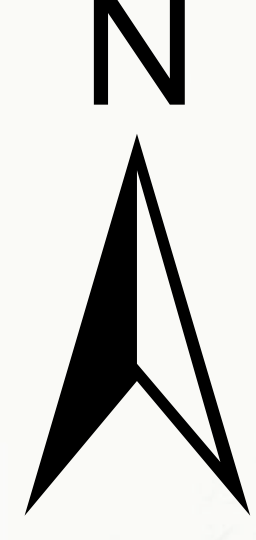
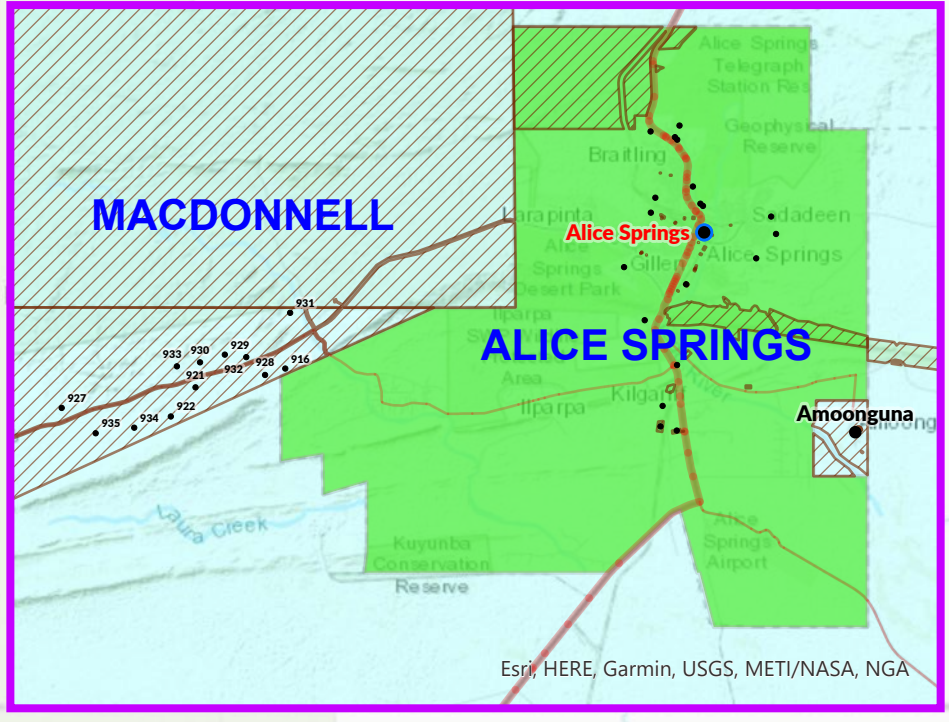
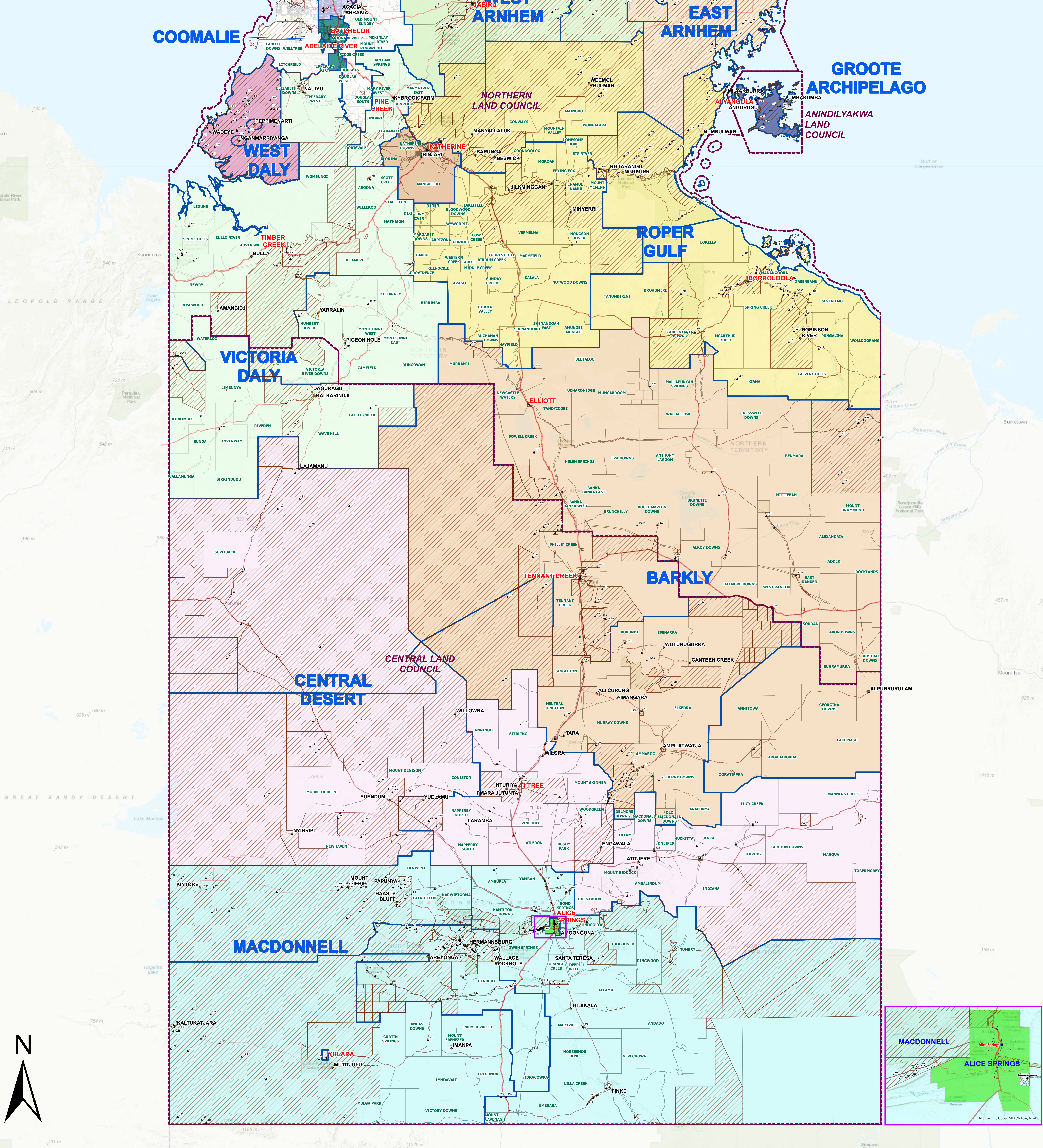
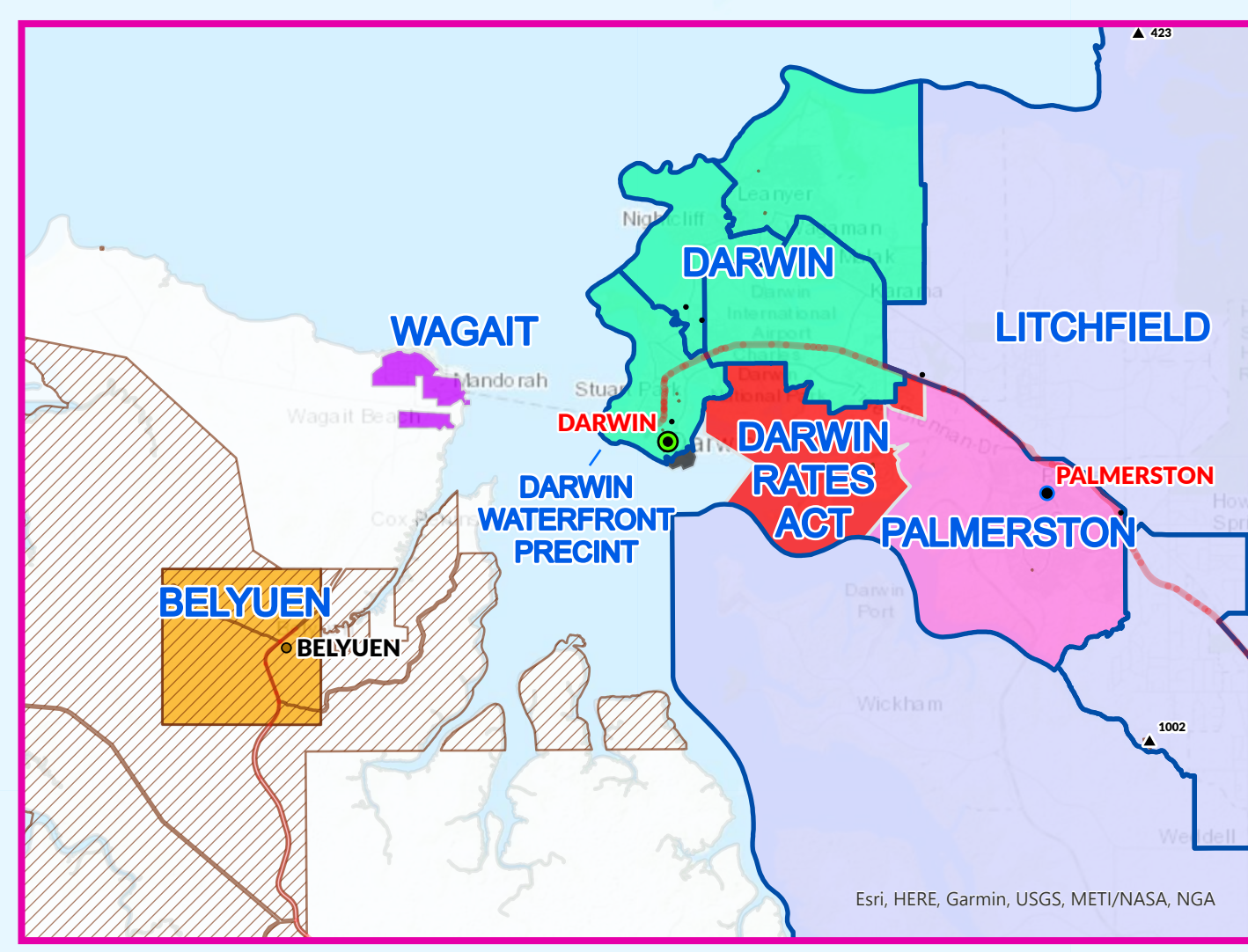


# NORTHERN TERRITORY LOCAL GOVERNMENT AREAS



MAP DESCRIPTION	LEGEND	DISCLAIMER	KEY MAP
<p>Local Government Areas, Wards, Land Councils and Land Trusts of the Northern Territory</p> <p><b>PRODUCTION INFORMATION</b></p> <p>GDA_1994 Print Date: 4/10/2024 Produced by: ED, RIET</p>	<p><b>NT Localities</b></p> <ul style="list-style-type: none"> <li>City</li> <li>Town</li> <li>Major</li> <li>Minor</li> <li>Village</li> <li>00000 Family Outstation</li> <li>Town Camp</li> </ul> <p><b>Local Government Area (LGA)</b></p> <ul style="list-style-type: none"> <li>BELYUEN</li> <li>CENTRAL DESERT</li> <li>COOMALIE</li> <li>DARWIN</li> <li>DARWIN RATES ACT</li> <li>DARWIN WATERFRONT PRECINCT</li> <li>EAST ARNHEM</li> <li>GROOTE ARCHIPELAGO</li> <li>KATHERINE</li> <li>LITCHFIELD</li> <li>MACDONNELL</li> <li>ALICE SPRINGS</li> <li>BARKLY</li> <li>BELYUEN</li> <li>TIWI ISLANDS</li> <li>UNINCORPORATED (ALYANGULA)</li> <li>UNINCORPORATED (COX-DALY)</li> <li>UNINCORPORATED (MARRAKAI-DOUGLAS DALY)</li> <li>UNINCORPORATED (NHLUNBUY)</li> <li>UNINCORPORATED (YULARA)</li> <li>VICTORIA DALY</li> <li>WAGAIT</li> <li>WEST ARNHEM</li> <li>WEST DALY</li> </ul> <p><b>Local Government Wards</b></p> <ul style="list-style-type: none"> <li>Aboriginal Land Councils</li> <li>Aboriginal Land Trusts</li> <li>Pastoral Properties</li> <li>Cadastre</li> <li>Highway</li> <li>Arterial</li> <li>Secondary</li> </ul>	<p>The Northern Territory of Australia does not warrant that the product or any part of it is correct or complete and will not be liable for any loss, damage or injury suffered by any person as a result of its inaccuracy or incompleteness. You are encouraged to notify any error or omission in the material by emailing <a href="mailto:bushlet@nt.gov.au">bushlet@nt.gov.au</a>.</p> <p><b>SCALE</b></p> <p>0 100 200 300 Kilometres</p>	