

HHIP – Western Desert Homelands Housing Upgrade
House 2 at Utily

COMPLETION REPORT



Service Provider	M & C Fior Constructions Pty Ltd trading as Bullant Building
Contact details	Sam van Jaarsveld 0499 410 554 sam@bullant.net admin@bullant.net
Australian Business Number (ABN)	28009650604
Contractor Accreditation Limited (CAL) Registration Number	A-31-12256-03-25
Community ID	24
Asset no.	2
Contact no.	WDHH00004
Completion date	2024/08/20

Project Summary – House 3

Bullant Building have completed the housing upgrade works to House 2 at Utily on behalf of the NT Territory, Families, Housing and Communities.

All works have been completed in accordance with the scope, and the final product has been delivered to the high standards expected by the NT Government.

The work commenced on July 1, 2024, and was completed on August 20, 2024.

Bullant Building achieved a 32% indigenous employment rate on this project and a 100% Northern Territorian employment.

Bullant Building was engaged to deliver the following scope of works for House 2 at Utily Homelands under agreement WDHH00004 for housing upgrades in the Western Desert Homelands region.

The completed scope of works includes:

Site establishment:

- Yard clean and cleared from all debris – stockpiled in fenced off area to be disposed at Haasts Bluff dump site
- Area was enclosed by the fence at the house with proper signage displayed to safeguard general public
- Isolation of power to house for cleaning entire house and reconnection of power after completion of works

Demolition

- Stripping and removal of all electrical fittings as per scope of works
- Removal and disposal of all windows, doors and fixtures as per scope of works
- Pressure clean entire house and scrub required areas

Construct new Bathroom

- New concrete floor for bathroom with plumbing
- Install new steel frame structure for the installation with panel rib and pink battens
- Construct new disabled shower, install vanity and toilet
- Waterproof wet areas
- Prep, tile and grout bathroom floors, shower walls and splash back
- Install 1 x new 820mm solid core door including hardware, RP4 door seals, lockset and screen door
- Install 1 x new obscure vented window with flyscreen
- Prepare and paint all surfaces (walls, ceilings, doors and frames)
- Install new electrical fittings including light fittings, switches, exhaust fan and electrical points as required
- Supply and install new plumbing fixtures and fittings including mixers, outlet, shower rose and waste grate
- Supply and install new stainless fixtures including soap dishes and mirror as per scope of works

Laundry on verandah

- Construct new laundry area on verandah
- Prepare and paint all surfaces
- Install new electrical fittings including light fittings, switches and electrical points as required
- Waterproof wet areas
- Supply and install new plumbing fixtures and fittings including mixers, outlet and waste grate
- Supply and install new stainless fixtures including soap dish, shelves, mirror and laundry trough as per scope of works

Bedroom 1 and 2

- Prep floors and tile
- Install 2 x new 820mm solid core door including hardware and lockset
- Remove one existing window from each room and install combo window for A/C provisions
- Block one window close in each room
- Prepare and paint all surfaces (walls, ceilings, doors and frames)
- Install and paint new pelmets
- Install new electrical fittings including light fittings, ceiling fans, switches and electrical points as required including new power point near window for A/C provision
- Install new stainless steel double door robe with extra shelves

Kitchen and living area

- Tile and grout splash back
- Prep floors and tile
- Install 1 x new 820mm solid core door including hardware, RP4 door seals and lockset
- Remove one existing window from living room and install combo window for A/C provisions
- Remove and service windows slider and replace flyscreen mesh for windows not replaced in living room and kitchen
- Prepare and paint all surfaces (walls, ceilings, doors and frames)
- Install new stainless-steel kitchen
- Install new stainless shelves and three drawer system
- Install new stainless steel pantry unit
- Install new oven
- Install and paint new pelmets
- Install new electrical fittings including light fittings, ceiling fans, exhaust fan, switches, smoke alarms, oven and electrical points as required including new power point near window for A/C provision.
- Upgrade electrical distribution board and make compliant

Enclose veranda

- Install new steel frame structure for the installation welded mesh
- Install Barker Humes door frame and welded mesh door with hardware and lockset
- Install panel rib ceiling and insulation
- Install new electrical fittings including light fittings, switches and electrical points as required
- Prepare and paint all surfaces (walls, ceilings, doors and frames)

External Areas and Works

- Install new T-frame clothesline with cable strings including prep and paint
- Construct new concrete clothesline slab
- Construct new pathway to clothesline
- Pressure-wash external of house including walls and floors
- Install panelrib and varmint proof side of house
- Test roof for leakages
- Install hot water unit with stand
- Install new electrical fittings including light fittings, light switches and power point
- Install new garden tap with concrete splash pad
- Enclose backside of caravan parked area with Colorbond sheets
- Construct frame to existing carport and install perforated sheets
- Construct concrete slab for rainwater tank
- Install new 2000L water tank to collect rainwater from roof

Handover

- Final internal and external builders clean
- Walk through with NT Government super intendent and test all electrical components
- Handover Documentation

Demobilisation

- Remove all builder's debris and waste and dispose at approved rubbish dump
- Final clean of area and yard
- Remove all builder's signage and fencing

Visual Progress

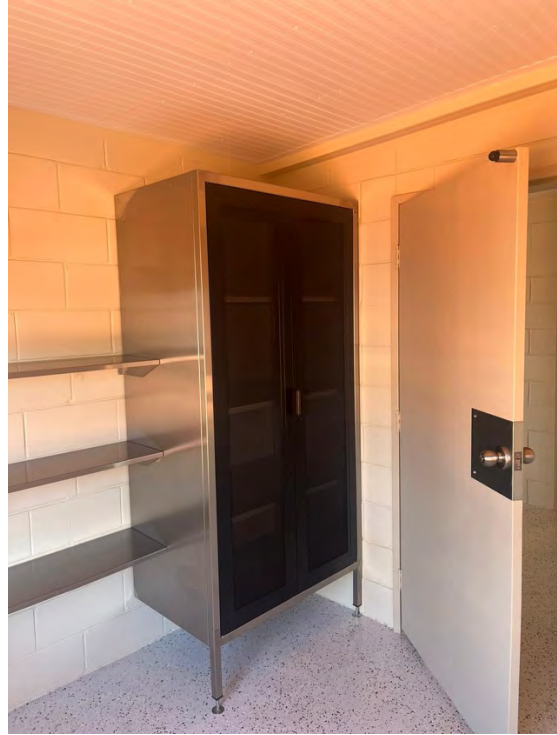
<p>Before</p>  <p>The 'Before' image shows a utility room with a concrete floor, a sink on a metal stand, a white stove, and a window with a metal grate. The walls are made of light-colored concrete blocks.</p>	<p>After</p>  <p>The 'After' image shows the same utility room but with a modernized look. It features a dark-colored kitchen-style cabinet under the sink, a white stove, and a window with a decorative glass insert. The floor is now a polished, speckled terrazzo.</p>
<p>Before</p>  <p>The 'Before' image shows an empty utility room with a concrete floor, a window with a metal grate, and a wall-mounted fan. The walls are made of light-colored concrete blocks.</p>	<p>After</p>  <p>The 'After' image shows the same empty utility room but with a modernized look. It features a window with a decorative glass insert, a wall-mounted fan, and a polished, speckled terrazzo floor. The walls are made of light-colored concrete blocks.</p>

WDHH00004 – Western Desert Homelands Housing Upgrade – House 2 – Utility

Before



After



Before



After



WDHH00004 – Western Desert Homelands Housing Upgrade – House 2 – Utility

Before



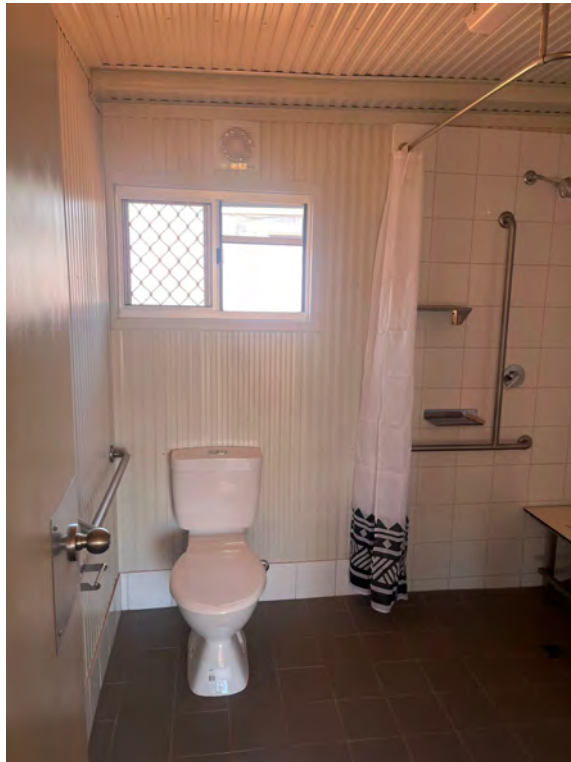
After



Before



After



WDHH00004 – Western Desert Homelands Housing Upgrade – House 2 – Utility

Before



After



Before



After



WDHH00004 – Western Desert Homelands Housing Upgrade – House 2 – Utility

Before



After



Before



After

