

## Completion Report

Project Name:	Burt Creek, Anpanaye & Corkwood Bore HHIP
Property Address:	House 3, Anpanaye





## Table of Contents

Project Summary.....	3
Plans.....	5
Visual Progress.....	10
Attachments.....	14

## Project Summary

Service provider	Ingkerreke Services Aboriginal Corporation
Contact details	Ms. Jozan Collins T: 08 8950 2200
Australian Business Number (ABN)	41 353 678 701
Contractor Accreditation Limited (CAL) Registration Number	A-18-14798-02-25
Community ID	713
Asset No.	House 3
Contract No.	HHIPC00011
Completion date	09/05/25

Ingkerreke Services Aboriginal Corporation (ISAC) undertook housing upgrades at House 3 Anpanaye on behalf of the Homeland and the Northern Territory Government. The project was executed as planned, resulting in a high-quality finish that fulfilled the expectations of both our client and the community.

The work began on 05 September 2024 and was completed save for security screens, shower screen and defeats by 25 October 2024 spanning a total of 8 weeks. Those remaining items were completed on 9 May 2025. On this project 30% of the full-time workforce involved in this project was comprised of Aboriginal staff and subcontractors.

The upgrades were designed in alignment with the 9 Healthy Living Principles, considering the specific requirements of families and individuals. These needs were identified through discussions with residents, stakeholders, and leveraging ISAC's ongoing experience with maintenance and repairs in the Homelands. As the service provider for Anpanaye, our aim was to ensure that funding was utilized effectively according to resident needs while maintaining high standards of quality and durability in the work performed.

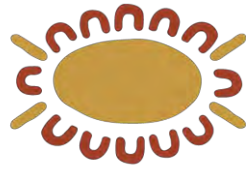
ISAC has been contracted to implement the following housing upgrade works for House 3 Anpanaye under the Capital Grant Funding Agreement (HHIPC00011). The completed works include:

#### House 4 Upgrades

- Extend structure to one side 9.8m x 3.5m.
- Extensions will include two bedrooms and a bathroom.
- The extensions will be of an insulated metal stud wall clad in metal design with a Bondor roof.
- Existing shed will be lined, and additional bulk insulation installed in the ceiling (walls are already insulated with Air Cell).
- Tile through.
- Existing shed veranda will be enclosed.
- Install European laundry to enclosed veranda.
- Electrical fit out to extension and enclosed veranda.
- Install windows and doors as per plans.

Install full septic system including:

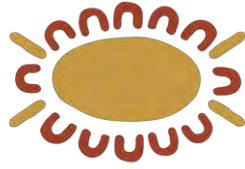
- Includes Distribution pits.
- 2x 25m Atlantis and pump out points.
- Remove tank at house 1 if not to standards and install septic system.
- Wrap Atlantis boxes with geo fabric to stop sand leeching and causing blockages.
- Install Bollards and Gatik Lid.



**Ingkerreke Services**  
Aboriginal Corporation

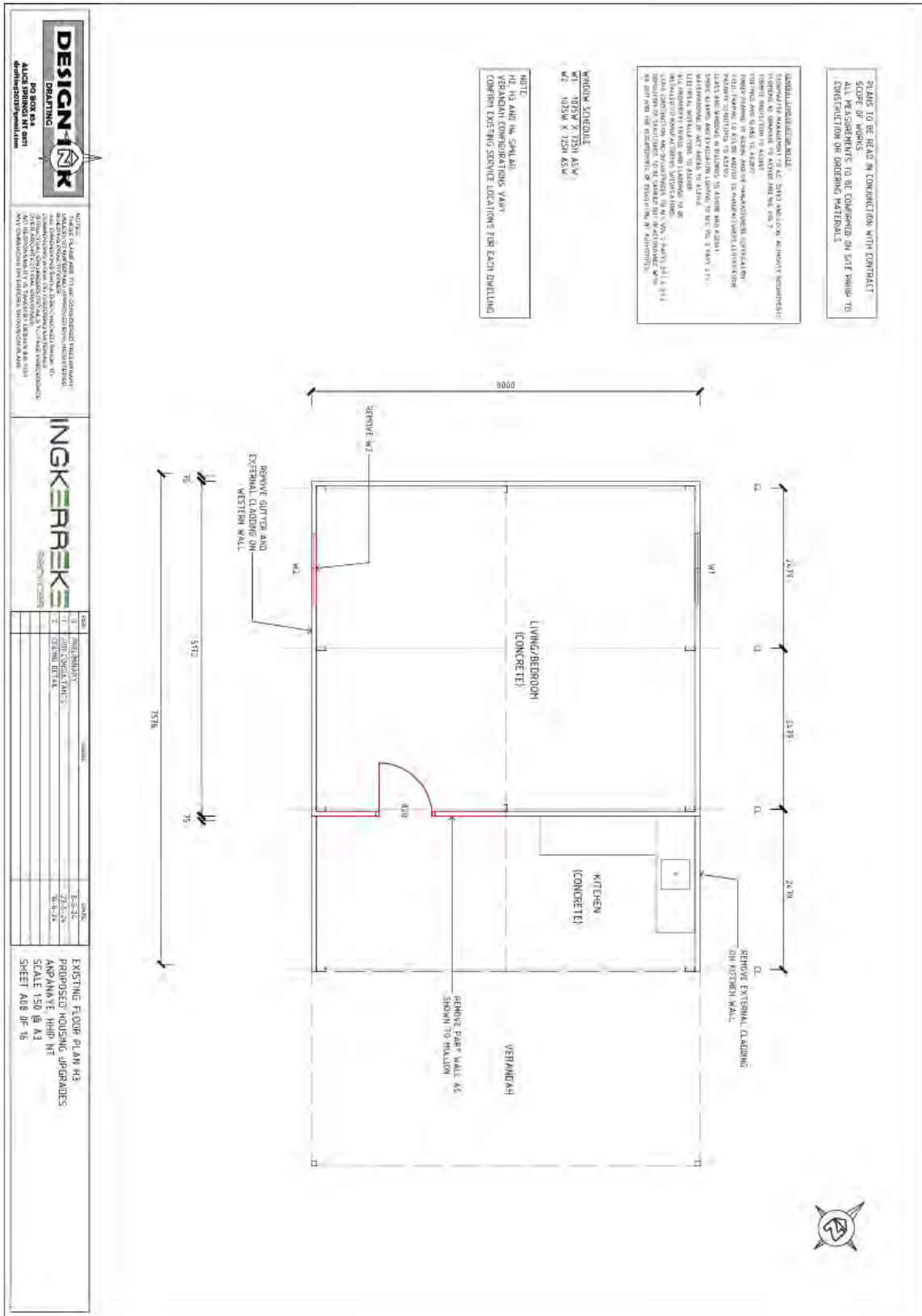
Plans

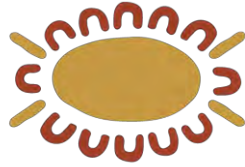




# Ingkerreke Services

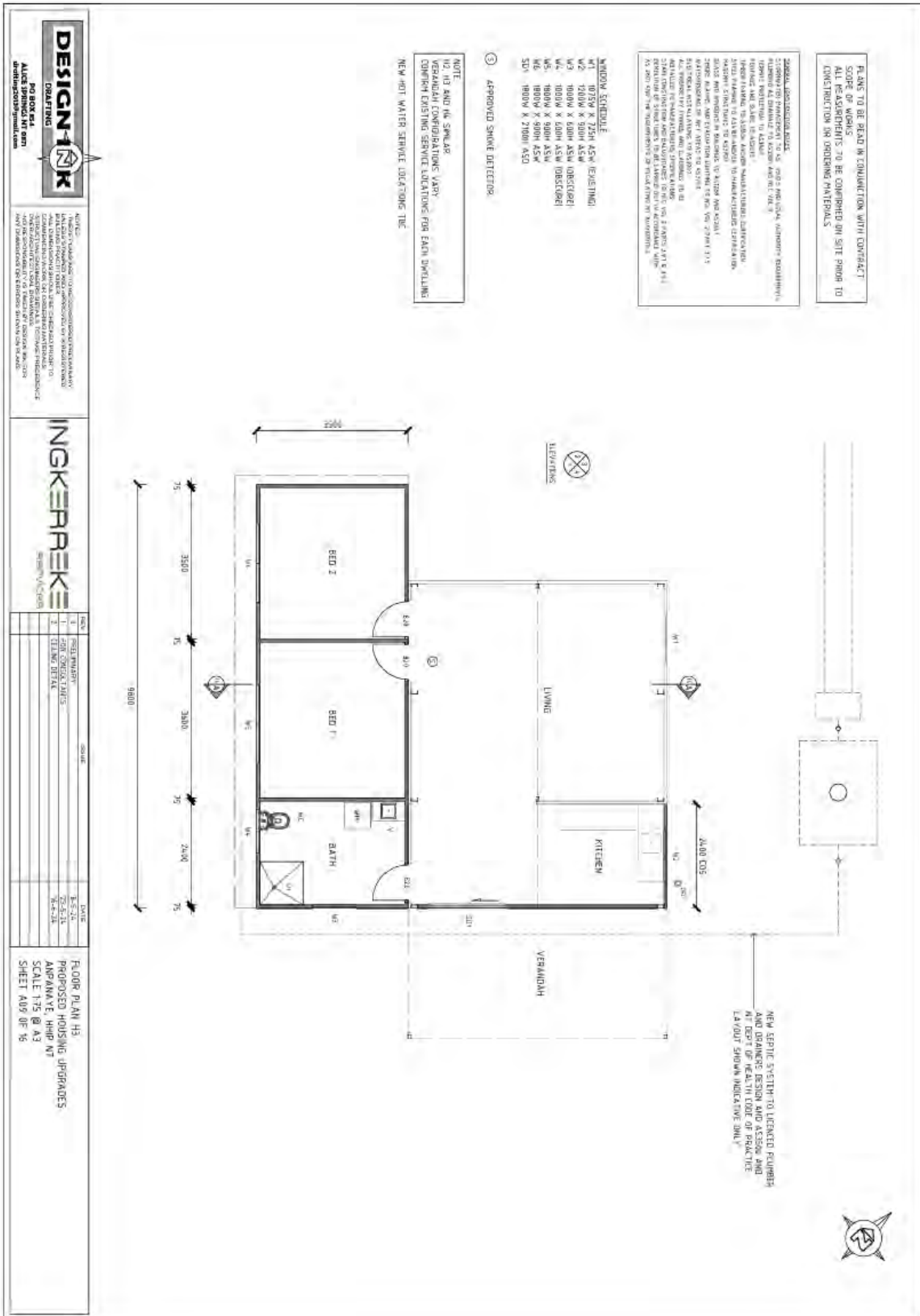
Aboriginal Corporation



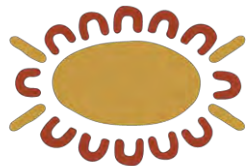


# Ingkerreke Services

Aboriginal Corporation

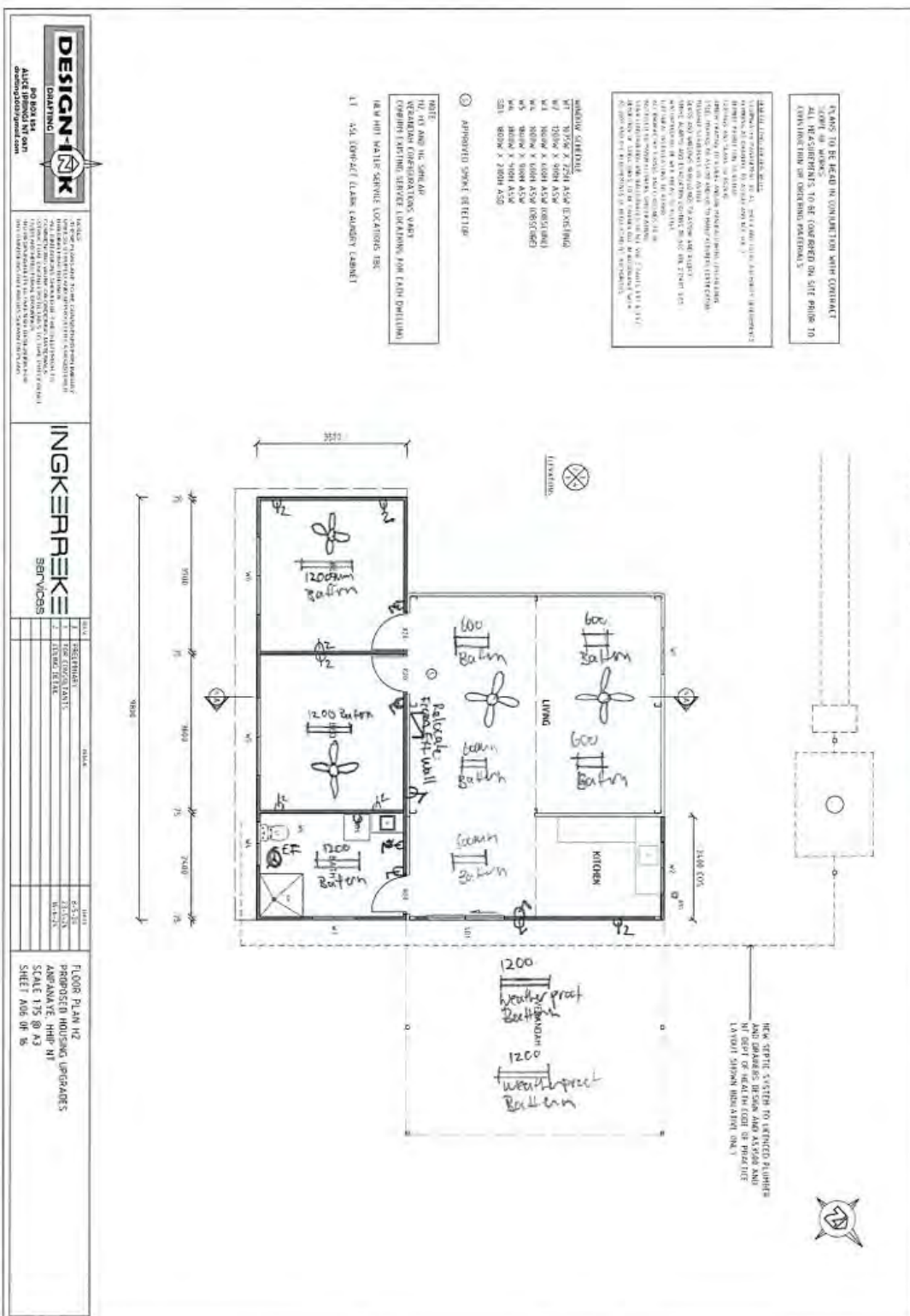






# Ingkerreke Services

Aboriginal Corporation



PLANS TO BE READ IN CONJUNCTION WITH CONTRACT  
 LIST OF WORKS  
 ALL MEASUREMENTS TO BE CONSIDERED ON SITE PRIOR TO  
 COMMENCING WORK PER CURRENT PRACTICES

**ADDITIONAL INFORMATION:**  
 CONTRACTOR TO VERIFY ALL DIMENSIONS AND LOCATIONS  
 OF ALL SERVICES TO BE INSTALLED AND TO REPORT ANY  
 DISCREPANCIES TO CLIENT PRIOR TO COMMENCING WORK  
 ALL SERVICES TO BE INSTALLED IN ACCORDANCE WITH  
 CURRENT AUSTRALIAN STANDARDS AND REGULATIONS  
 ALL SERVICES TO BE INSTALLED IN ACCORDANCE WITH  
 CURRENT AUSTRALIAN STANDARDS AND REGULATIONS  
 ALL SERVICES TO BE INSTALLED IN ACCORDANCE WITH  
 CURRENT AUSTRALIAN STANDARDS AND REGULATIONS

**WINDOW SCHEDULE:**  
 W1: 1750 X 750 ALUM EXTERNAL  
 W2: 1750 X 750 ALUM INTERNAL  
 W3: 1750 X 750 ALUM INTERNAL  
 W4: 1750 X 750 ALUM INTERNAL  
 W5: 1750 X 750 ALUM INTERNAL  
 W6: 1750 X 750 ALUM INTERNAL  
 W7: 1750 X 750 ALUM INTERNAL  
 W8: 1750 X 750 ALUM INTERNAL  
 W9: 1750 X 750 ALUM INTERNAL  
 W10: 1750 X 750 ALUM INTERNAL  
 W11: 1750 X 750 ALUM INTERNAL  
 W12: 1750 X 750 ALUM INTERNAL  
 W13: 1750 X 750 ALUM INTERNAL  
 W14: 1750 X 750 ALUM INTERNAL  
 W15: 1750 X 750 ALUM INTERNAL  
 W16: 1750 X 750 ALUM INTERNAL  
 W17: 1750 X 750 ALUM INTERNAL  
 W18: 1750 X 750 ALUM INTERNAL  
 W19: 1750 X 750 ALUM INTERNAL  
 W20: 1750 X 750 ALUM INTERNAL  
 W21: 1750 X 750 ALUM INTERNAL  
 W22: 1750 X 750 ALUM INTERNAL  
 W23: 1750 X 750 ALUM INTERNAL  
 W24: 1750 X 750 ALUM INTERNAL  
 W25: 1750 X 750 ALUM INTERNAL  
 W26: 1750 X 750 ALUM INTERNAL  
 W27: 1750 X 750 ALUM INTERNAL  
 W28: 1750 X 750 ALUM INTERNAL  
 W29: 1750 X 750 ALUM INTERNAL  
 W30: 1750 X 750 ALUM INTERNAL  
 W31: 1750 X 750 ALUM INTERNAL  
 W32: 1750 X 750 ALUM INTERNAL  
 W33: 1750 X 750 ALUM INTERNAL  
 W34: 1750 X 750 ALUM INTERNAL  
 W35: 1750 X 750 ALUM INTERNAL  
 W36: 1750 X 750 ALUM INTERNAL  
 W37: 1750 X 750 ALUM INTERNAL  
 W38: 1750 X 750 ALUM INTERNAL  
 W39: 1750 X 750 ALUM INTERNAL  
 W40: 1750 X 750 ALUM INTERNAL  
 W41: 1750 X 750 ALUM INTERNAL  
 W42: 1750 X 750 ALUM INTERNAL  
 W43: 1750 X 750 ALUM INTERNAL  
 W44: 1750 X 750 ALUM INTERNAL  
 W45: 1750 X 750 ALUM INTERNAL  
 W46: 1750 X 750 ALUM INTERNAL  
 W47: 1750 X 750 ALUM INTERNAL  
 W48: 1750 X 750 ALUM INTERNAL  
 W49: 1750 X 750 ALUM INTERNAL  
 W50: 1750 X 750 ALUM INTERNAL  
 W51: 1750 X 750 ALUM INTERNAL  
 W52: 1750 X 750 ALUM INTERNAL  
 W53: 1750 X 750 ALUM INTERNAL  
 W54: 1750 X 750 ALUM INTERNAL  
 W55: 1750 X 750 ALUM INTERNAL  
 W56: 1750 X 750 ALUM INTERNAL  
 W57: 1750 X 750 ALUM INTERNAL  
 W58: 1750 X 750 ALUM INTERNAL  
 W59: 1750 X 750 ALUM INTERNAL  
 W60: 1750 X 750 ALUM INTERNAL  
 W61: 1750 X 750 ALUM INTERNAL  
 W62: 1750 X 750 ALUM INTERNAL  
 W63: 1750 X 750 ALUM INTERNAL  
 W64: 1750 X 750 ALUM INTERNAL  
 W65: 1750 X 750 ALUM INTERNAL  
 W66: 1750 X 750 ALUM INTERNAL  
 W67: 1750 X 750 ALUM INTERNAL  
 W68: 1750 X 750 ALUM INTERNAL  
 W69: 1750 X 750 ALUM INTERNAL  
 W70: 1750 X 750 ALUM INTERNAL  
 W71: 1750 X 750 ALUM INTERNAL  
 W72: 1750 X 750 ALUM INTERNAL  
 W73: 1750 X 750 ALUM INTERNAL  
 W74: 1750 X 750 ALUM INTERNAL  
 W75: 1750 X 750 ALUM INTERNAL  
 W76: 1750 X 750 ALUM INTERNAL  
 W77: 1750 X 750 ALUM INTERNAL  
 W78: 1750 X 750 ALUM INTERNAL  
 W79: 1750 X 750 ALUM INTERNAL  
 W80: 1750 X 750 ALUM INTERNAL  
 W81: 1750 X 750 ALUM INTERNAL  
 W82: 1750 X 750 ALUM INTERNAL  
 W83: 1750 X 750 ALUM INTERNAL  
 W84: 1750 X 750 ALUM INTERNAL  
 W85: 1750 X 750 ALUM INTERNAL  
 W86: 1750 X 750 ALUM INTERNAL  
 W87: 1750 X 750 ALUM INTERNAL  
 W88: 1750 X 750 ALUM INTERNAL  
 W89: 1750 X 750 ALUM INTERNAL  
 W90: 1750 X 750 ALUM INTERNAL  
 W91: 1750 X 750 ALUM INTERNAL  
 W92: 1750 X 750 ALUM INTERNAL  
 W93: 1750 X 750 ALUM INTERNAL  
 W94: 1750 X 750 ALUM INTERNAL  
 W95: 1750 X 750 ALUM INTERNAL  
 W96: 1750 X 750 ALUM INTERNAL  
 W97: 1750 X 750 ALUM INTERNAL  
 W98: 1750 X 750 ALUM INTERNAL  
 W99: 1750 X 750 ALUM INTERNAL  
 W100: 1750 X 750 ALUM INTERNAL

**NOTE:**  
 ALL DIMENSIONS TO FACE UNLESS  
 OTHERWISE SPECIFIED  
 ALL SERVICES TO BE INSTALLED IN ACCORDANCE WITH  
 CURRENT AUSTRALIAN STANDARDS AND REGULATIONS  
 ALL SERVICES TO BE INSTALLED IN ACCORDANCE WITH  
 CURRENT AUSTRALIAN STANDARDS AND REGULATIONS  
 ALL SERVICES TO BE INSTALLED IN ACCORDANCE WITH  
 CURRENT AUSTRALIAN STANDARDS AND REGULATIONS

**DESIGN-IT-K**  
 CONSULTING  
 PO BOX 824  
 ALICE SPRINGS NT 0871  
 0813 824 824

**INGKERREKE SERVICES**

NO.	DESCRIPTION	DATE
1	ISSUE FOR TENDERS	25/03/20
2	REVISED FOR TENDERS	25/03/20
3	REVISED FOR TENDERS	25/03/20
4	REVISED FOR TENDERS	25/03/20
5	REVISED FOR TENDERS	25/03/20
6	REVISED FOR TENDERS	25/03/20
7	REVISED FOR TENDERS	25/03/20
8	REVISED FOR TENDERS	25/03/20
9	REVISED FOR TENDERS	25/03/20
10	REVISED FOR TENDERS	25/03/20
11	REVISED FOR TENDERS	25/03/20
12	REVISED FOR TENDERS	25/03/20
13	REVISED FOR TENDERS	25/03/20
14	REVISED FOR TENDERS	25/03/20
15	REVISED FOR TENDERS	25/03/20
16	REVISED FOR TENDERS	25/03/20
17	REVISED FOR TENDERS	25/03/20
18	REVISED FOR TENDERS	25/03/20
19	REVISED FOR TENDERS	25/03/20
20	REVISED FOR TENDERS	25/03/20
21	REVISED FOR TENDERS	25/03/20
22	REVISED FOR TENDERS	25/03/20
23	REVISED FOR TENDERS	25/03/20
24	REVISED FOR TENDERS	25/03/20
25	REVISED FOR TENDERS	25/03/20
26	REVISED FOR TENDERS	25/03/20
27	REVISED FOR TENDERS	25/03/20
28	REVISED FOR TENDERS	25/03/20
29	REVISED FOR TENDERS	25/03/20
30	REVISED FOR TENDERS	25/03/20
31	REVISED FOR TENDERS	25/03/20
32	REVISED FOR TENDERS	25/03/20
33	REVISED FOR TENDERS	25/03/20
34	REVISED FOR TENDERS	25/03/20
35	REVISED FOR TENDERS	25/03/20
36	REVISED FOR TENDERS	25/03/20
37	REVISED FOR TENDERS	25/03/20
38	REVISED FOR TENDERS	25/03/20
39	REVISED FOR TENDERS	25/03/20
40	REVISED FOR TENDERS	25/03/20
41	REVISED FOR TENDERS	25/03/20
42	REVISED FOR TENDERS	25/03/20
43	REVISED FOR TENDERS	25/03/20
44	REVISED FOR TENDERS	25/03/20
45	REVISED FOR TENDERS	25/03/20
46	REVISED FOR TENDERS	25/03/20
47	REVISED FOR TENDERS	25/03/20
48	REVISED FOR TENDERS	25/03/20
49	REVISED FOR TENDERS	25/03/20
50	REVISED FOR TENDERS	25/03/20
51	REVISED FOR TENDERS	25/03/20
52	REVISED FOR TENDERS	25/03/20
53	REVISED FOR TENDERS	25/03/20
54	REVISED FOR TENDERS	25/03/20
55	REVISED FOR TENDERS	25/03/20
56	REVISED FOR TENDERS	25/03/20
57	REVISED FOR TENDERS	25/03/20
58	REVISED FOR TENDERS	25/03/20
59	REVISED FOR TENDERS	25/03/20
60	REVISED FOR TENDERS	25/03/20
61	REVISED FOR TENDERS	25/03/20
62	REVISED FOR TENDERS	25/03/20
63	REVISED FOR TENDERS	25/03/20
64	REVISED FOR TENDERS	25/03/20
65	REVISED FOR TENDERS	25/03/20
66	REVISED FOR TENDERS	25/03/20
67	REVISED FOR TENDERS	25/03/20
68	REVISED FOR TENDERS	25/03/20
69	REVISED FOR TENDERS	25/03/20
70	REVISED FOR TENDERS	25/03/20
71	REVISED FOR TENDERS	25/03/20
72	REVISED FOR TENDERS	25/03/20
73	REVISED FOR TENDERS	25/03/20
74	REVISED FOR TENDERS	25/03/20
75	REVISED FOR TENDERS	25/03/20
76	REVISED FOR TENDERS	25/03/20
77	REVISED FOR TENDERS	25/03/20
78	REVISED FOR TENDERS	25/03/20
79	REVISED FOR TENDERS	25/03/20
80	REVISED FOR TENDERS	25/03/20
81	REVISED FOR TENDERS	25/03/20
82	REVISED FOR TENDERS	25/03/20
83	REVISED FOR TENDERS	25/03/20
84	REVISED FOR TENDERS	25/03/20
85	REVISED FOR TENDERS	25/03/20
86	REVISED FOR TENDERS	25/03/20
87	REVISED FOR TENDERS	25/03/20
88	REVISED FOR TENDERS	25/03/20
89	REVISED FOR TENDERS	25/03/20
90	REVISED FOR TENDERS	25/03/20
91	REVISED FOR TENDERS	25/03/20
92	REVISED FOR TENDERS	25/03/20
93	REVISED FOR TENDERS	25/03/20
94	REVISED FOR TENDERS	25/03/20
95	REVISED FOR TENDERS	25/03/20
96	REVISED FOR TENDERS	25/03/20
97	REVISED FOR TENDERS	25/03/20
98	REVISED FOR TENDERS	25/03/20
99	REVISED FOR TENDERS	25/03/20
100	REVISED FOR TENDERS	25/03/20

FLOOR PLAN H2  
 PROPOSED HOUSING UPGRADES  
 ARRANGEMENT H2H1 H1  
 SCALE 1:75 @ A3  
 SHEET NO. 08 OF 36

## Visual Progress

Before:



Before:

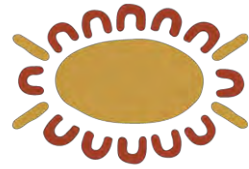


Before:



Before:





# Ingkerreke Services

Aboriginal Corporation

After:



After:

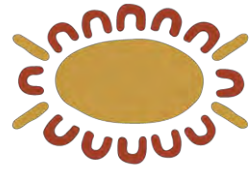


After:



After:





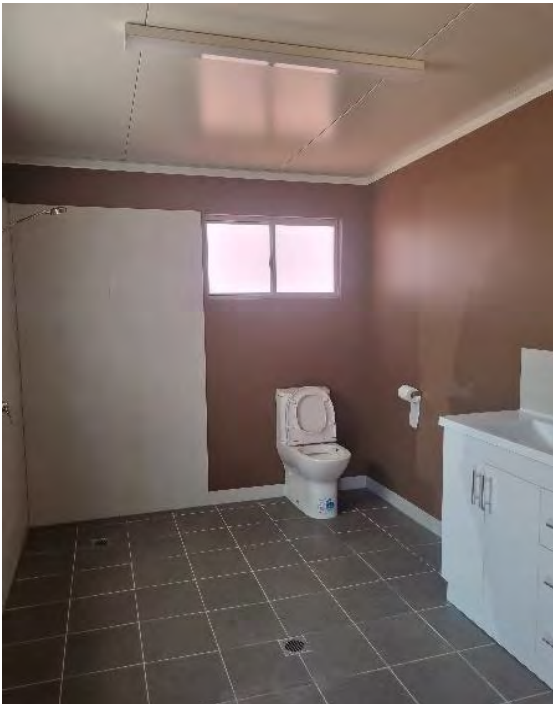
After:



After:

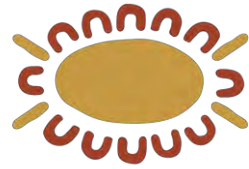


After:



After:





# Ingkerreke Services

Aboriginal Corporation

After:



After:



After:



After:

